



Bilag til evalueringsrapport vedrørende

**Non-operativ behandling af distale
håndledsfrakturer hos aldrende
patienter**

Behandlingsrådet

Bilag

Bilag er et tillæg til Evalueringsrapporten vedrørende Non-operativ behandling af distale radiusfrakturer hos patienter over 65 år, som kan ses på Behandlingsrådets hjemmeside.

Oplysninger om dokumentet

Godkendelses- dato:	Dokumentnummer:	Versionsnummer:
08.02.2024	7873	1.0

Versionsnr.:	Dato:	Ændring:
1.0	08.02.2024	Godkendt af Behandlingsrådet

Indhold

Bilag	2
Oplysninger om dokumentet	2
Indhold	3
1 Bilag til litteratursøgning	4
1.1 Søgestrengene – Guidelines	4
1.2 Søgestrengene – Klinisk effekt og sikkerhed	6
1.3 Søgeresultater – Klinisk effekt og sikkerhed	13
1.4 Søgestrengene - Patientperspektiv	14
1.5 Søgeresultater - Patientperspektiv	18
1.6 Søgestrengene – Organisatoriske implikationer	19
1.7 Søgeresultater – Organisatoriske implikationer	24
1.8 Søgestrengene - Sundhedsøkonomi	24
1.9 Søgeresultater - Sundhedsøkonomi	28
1.10 Prismadiagrammer	29
2 Bilag til Klinisk effekt og sikkerhed	34
2.1 Oversigt over komplikationer	34
2.2 Resultater for de enkelte studier	35
2.3 Resultater fra metaanalyser	40

1

Bilag til litteratursøgning

1.1 Søgestrengene – Guidelines

Søgestreg for PubMed

Search	Query	Results
#16	Search: (((((((("Wrist Injuries"[Mesh]) OR ("Radius Fractures"[Mesh])) OR (wrist fracture*[Title/Abstract])) OR (radius fracture*[Title/Abstract] OR radial fracture*[Title/Abstract])) OR (colles' fracture*[Title/Abstract] OR colles fracture*[Title/Abstract])) NOT (("Adolescent"[Mesh] OR "Child"[Mesh]) NOT ("Adult"[Mesh])) AND (("Guideline"[pt] OR "practice guideline"[pt] OR "consensus development conference"[pt] OR "consensus development conference, NIH"[pt] OR guideline*[ti] OR standards[ti] OR consensus*[ti] OR recommendat*[ti] OR guideline*[cn] OR standards[cn] OR consensus*[cn] OR recommendat*[cn] OR "practice guideline"*[tiab] OR "treatment guideline"*[tiab] OR "clinical guideline"*[tiab] OR "guideline recommendation"*[tiab]) OR ("technology assessment"*[tiab] OR "technology overview"*[tiab] OR "technology appraisal"*[tiab] OR "Technology Assessment, Biomedical"[mh] OR HTA[tiab] OR HTAs[tiab]))) AND (("2013"[Date - Publication] : "2023"[Date - Publication]))) AND (Danish[Language] OR English[Language] OR Norwegian[Language] OR Swedish[Language]) Sort by: Publication Date	<u>74</u>
#15	Search: (((((((("Wrist Injuries"[Mesh]) OR ("Radius Fractures"[Mesh])) OR (wrist fracture*[Title/Abstract])) OR (radius fracture*[Title/Abstract] OR radial fracture*[Title/Abstract])) OR (colles' fracture*[Title/Abstract] OR colles fracture*[Title/Abstract])) NOT (("Adolescent"[Mesh] OR "Child"[Mesh]) NOT ("Adult"[Mesh])) AND (("Guideline"[pt] OR "practice guideline"[pt] OR "consensus development conference"[pt] OR "consensus development conference, NIH"[pt] OR guideline*[ti] OR standards[ti] OR consensus*[ti] OR recommendat*[ti] OR guideline*[cn] OR standards[cn] OR consensus*[cn] OR recommendat*[cn] OR "practice guideline"*[tiab] OR "treatment guideline"*[tiab] OR "clinical guideline"*[tiab] OR "guideline recommendation"*[tiab]) OR ("technology assessment"*[tiab] OR "technology overview"*[tiab] OR "technology appraisal"*[tiab] OR "Technology Assessment, Biomedical"[mh] OR HTA[tiab] OR HTAs[tiab])) Sort by: Publication Date	<u>112</u>
#14	Search: ("Guideline"[pt] OR "practice guideline"[pt] OR "consensus development conference"[pt] OR "consensus development conference, NIH"[pt] OR guideline*[ti] OR standards[ti] OR consensus*[ti] OR recommendat*[ti] OR guideline*[cn] OR standards[cn] OR consensus*[cn] OR recommendat*[cn] OR "practice guideline"*[tiab] OR "treatment guideline"*[tiab] OR "clinical guideline"*[tiab] OR "guideline recommendation"*[tiab]) OR ("technology assessment"*[tiab] OR "technology overview"*[tiab] OR "technology appraisal"*[tiab] OR "Technology Assessment, Biomedical"[mh] OR HTA[tiab] OR HTAs[tiab]) Sort by: Publication Date	<u>278,438</u>
#10	Search: (((((((("Wrist Injuries"[Mesh]) OR ("Radius Fractures"[Mesh])) OR (wrist fracture*[Title/Abstract])) OR (radius fracture*[Title/Abstract] OR radial fracture*[Title/Abstract])) OR (colles' fracture*[Title/Abstract] OR colles fracture*[Title/Abstract])) NOT (("Adolescent"[Mesh] OR "Child"[Mesh]) NOT ("Adult"[Mesh])) Sort by: Publication Date	<u>16,608</u>

#9	Search: ("Adolescent"[Mesh] OR "Child"[Mesh]) NOT ("Adult"[Mesh]) Sort by: Publication Date	<u>1,645,481</u>
#8	Search: "Adult"[Mesh] Sort by: Most Recent	<u>7,964,130</u>
#7	Search: "Adolescent"[Mesh] OR "Child"[Mesh] Sort by: Publication Date	<u>3,376,780</u>
#6	Search: (((("Wrist Injuries"[Mesh]) OR ("Radius Fractures"[Mesh])) OR (wrist fracture*[Title/Abstract])) OR (radius fracture*[Title/Abstract] OR radial fracture*[Title/Abstract])) OR (colles' fracture*[Title/Abstract] OR colles fracture*[Title/Abstract]) Sort by: Publication Date	<u>18,893</u>
#5	Search: colles' fracture*[Title/Abstract] OR colles fracture*[Title/Abstract] Sort by: Publication Date	<u>862</u>
#4	Search: radius fracture*[Title/Abstract] OR radial fracture*[Title/Abstract] Sort by: Publication Date	<u>6,489</u>
#3	Search: wrist fracture*[Title/Abstract] Sort by: Publication Date	<u>1,392</u>
#2	Search: "Radius Fractures"[Mesh] Sort by: Most Recent	<u>11,021</u>
#1	Search: "Wrist Injuries"[Mesh] Sort by: Most Recent	<u>7,012</u>

Søgestreng for Embase

No.	Query	Results
#13	#12 NOT ('conference abstract'/it OR 'conference review'/it)	150
#12	#5 AND #10 AND ([danish]/lim OR [english]/lim OR [norwegian]/lim OR [swedish]/lim) AND [2013-2023]/py	196
#11	#5 AND #10	288
#10	#6 OR #7 OR #8 OR #9	892061
#9	guideline*:ti,kw OR 'practice guideline*':ti,kw OR 'clinical guideline*':ti,kw OR guidance:ti,kw OR consensus:ti,kw OR recommendation*:ti,kw	281981
#8	'practice guideline'/exp	716172
#7	'technology assessment*':ti,ab,kw OR hta:ti,ab,kw OR htas:ti,ab,kw OR 'technology overview*':ti,ab,kw OR 'technology appraisal*':ti,ab,kw	18615
#6	'biomedical technology assessment'/exp	17442
#5	#3 NOT #4	9965
#4	'juvenile'/exp NOT 'adult'/exp	2825451
#3	#1 OR #2	10748
#2	((radius OR radial OR wrist OR colle*) NEAR/1 fracture*):ti,ab,kw	9759
#1	'wrist fracture'/mj OR 'distal radius fracture'/exp/mj	3881

1.2 Søgestrengene – Klinisk effekt og sikkerhed

1.2.1 Søgestreng for sekundærlitteratur

Søgestreng for PubMed

Search	Query	Results
#15	Search: (((((((("Radius Fractures"[Mesh]) OR ("Wrist Injuries"[Mesh])) OR (distal[Title/Abstract] AND (radius[Title/Abstract] OR radial*[Title/Abstract]) AND fracture*[Title/Abstract])) OR (colles fracture*[Title/Abstract] OR colles' fracture*[Title/Abstract] OR wrist fracture*[Title/Abstract])) OR (smith's fracture*[Title/Abstract] OR barton's fracture*[Title/Abstract])) NOT (("Child"[Mesh]) NOT "Adult"[Mesh])) NOT (pediatr*[Title] OR paediatr*[Title] OR infant*[Title] OR newborn*[Title] OR child[Title] OR children*[Title])) AND ("Systematic Review"[Publication Type] OR "Systematic Reviews as Topic"[Mesh] OR systematic review*[Title/Abstract] OR systematic[sb] OR "Meta-Analysis as Topic"[Mesh] OR "Meta-Analysis" [Publication Type] OR metaanalys*[Title/Abstract] OR meta-analys*[Title/Abstract])) AND (("2020"[Date - Publication] : "2023"[Date - Publication])) AND (Danish[Language] OR English[Language] OR Norwegian[Language] OR Swedish[Language]) Sort by: Publication Date	<u>167</u>
#14	Search: (((((((("Radius Fractures"[Mesh]) OR ("Wrist Injuries"[Mesh])) OR (distal[Title/Abstract] AND (radius[Title/Abstract] OR radial*[Title/Abstract]) AND fracture*[Title/Abstract])) OR (colles fracture*[Title/Abstract] OR colles' fracture*[Title/Abstract] OR wrist fracture*[Title/Abstract])) OR (smith's fracture*[Title/Abstract] OR barton's fracture*[Title/Abstract])) NOT (("Child"[Mesh]) NOT "Adult"[Mesh])) NOT (pediatr*[Title] OR paediatr*[Title] OR infant*[Title] OR newborn*[Title] OR child[Title] OR children*[Title])) AND ("Systematic Review"[Publication Type] OR "Systematic Reviews as Topic"[Mesh] OR systematic review*[Title/Abstract] OR systematic[sb] OR "Meta-Analysis as Topic"[Mesh] OR "Meta-Analysis" [Publication Type] OR metaanalys*[Title/Abstract] OR meta-analys*[Title/Abstract])) Sort by: Publication Date	<u>439</u>
#13	Search: "Systematic Review"[Publication Type] OR "Systematic Reviews as Topic"[Mesh] OR systematic review*[Title/Abstract] OR systematic[sb] OR "Meta-Analysis as Topic"[Mesh] OR "Meta-Analysis" [Publication Type] OR metaanalys*[Title/Abstract] OR meta-analys*[Title/Abstract] Sort by: Publication Date	<u>480,416</u>
#12	Search: (((((((("Radius Fractures"[Mesh]) OR ("Wrist Injuries"[Mesh])) OR (distal[Title/Abstract] AND (radius[Title/Abstract] OR radial*[Title/Abstract]) AND fracture*[Title/Abstract])) OR (colles fracture*[Title/Abstract] OR colles' fracture*[Title/Abstract] OR wrist fracture*[Title/Abstract])) OR (smith's fracture*[Title/Abstract] OR barton's fracture*[Title/Abstract])) NOT (("Child"[Mesh]) NOT "Adult"[Mesh])) NOT (pediatr*[Title] OR paediatr*[Title] OR infant*[Title] OR newborn*[Title] OR child[Title] OR children*[Title])) Sort by: Publication Date	

#11	Search: pediatr*[Title] OR paediatr*[Title] OR infant*[Title] OR newborn*[Title] OR child[Title] OR children*[Title] Sort by: Publication Date	<u>1,209,858</u>
#10	Search: (((("Radius Fractures"[Mesh]) OR ("Wrist Injuries"[Mesh])) OR (distal[Title/Abstract] AND (radius[Title/Abstract] OR radial*[Title/Abstract]) AND fracture*[Title/Abstract])) OR (colles fracture*[Title/Abstract] OR colles' fracture*[Title/Abstract] OR wrist fracture*[Title/Abstract])) OR (smith's fracture*[Title/Abstract] OR barton's fracture*[Title/Abstract])) NOT ("Child"[Mesh]) NOT "Adult"[Mesh] Sort by: Publication Date	<u>18,890</u>
#9	Search: ("Child"[Mesh]) NOT "Adult"[Mesh] Sort by: Most Recent	<u>1,399,578</u>
#8	Search: (((("Radius Fractures"[Mesh]) OR ("Wrist Injuries"[Mesh])) OR (distal[Title/Abstract] AND (radius[Title/Abstract] OR radial*[Title/Abstract]) AND fracture*[Title/Abstract])) OR (colles fracture*[Title/Abstract] OR colles' fracture*[Title/Abstract] OR wrist fracture*[Title/Abstract])) OR (smith's fracture*[Title/Abstract] OR barton's fracture*[Title/Abstract])) Sort by: Publication Date	<u>21,015</u>
#7	Search: smith's fracture*[Title/Abstract] OR barton's fracture*[Title/Abstract] Sort by: Publication Date	<u>79</u>
#5	Search: colles fracture*[Title/Abstract] OR colles' fracture*[Title/Abstract] OR wrist fracture*[Title/Abstract] Sort by: Publication Date	<u>2,237</u>
#3	Search: distal[Title/Abstract] AND (radius[Title/Abstract] OR radial*[Title/Abstract]) AND fracture*[Title/Abstract] Sort by: Publication Date	<u>9,548</u>
#2	Search: "Wrist Injuries"[Mesh] Sort by: Most Recent	<u>7,022</u>
#1	Search: "Radius Fractures"[Mesh] Sort by: Most Recent	<u>11,027</u>

Søgestreng for Embase

No.	Query	Results
#11	#10 NOT ('conference abstract'/it OR 'conference paper'/it OR 'conference review'/it)	237
#10	#9 AND ([danish]/lim OR [english]/lim OR [norwegian]/lim OR [swedish]/lim) AND [2020-2023]/py	263
#9	#7 AND #8	708
#8	'systematic review'/exp OR 'meta analysis'/exp OR 'meta analy*':ti,ab,de OR 'meta-analy*':ti,ab,de OR metaanaly*':ti,ab,de OR ((systematic NEAR/3 (review* OR overview* OR study OR studies OR search* OR approach*)):ti,ab,de)	798277
#7	#6 NOT (p\$ediatr*:ti OR infant*:ti OR newborn*:ti OR child:ti OR children*:ti)	17780
#6	#5 NOT ('child'/exp NOT 'adult'/exp)	18086
#5	#1 OR #2 OR #3 OR #4	20001
#4	((colles* OR smith* OR barton* OR wrist) NEAR/2 fracture*):ti,ab,kw	3427
#3	(distal NEAR/2 (radius OR radial) NEAR/2 fracture*):ti,ab,kw	6387

#2	'wrist fracture'/de	3943
#1	'radius fracture'/exp	15543

Søgestreng for Cochrane

ID	Search	Hits
#1	MeSH descriptor: [Radius Fractures] explode all trees	806
#2	MeSH descriptor: [Wrist Injuries] explode all trees	209
#3	(distal NEAR/2 (radius OR radial) NEAR/2 fracture*):ti,ab,kw	1187
#4	((colles* OR smith* OR barton* OR wrist) NEAR/2 fracture*):ti,ab,kw	678
#5	{OR #1-#4}	1906
#6	MeSH descriptor: [Child] explode all trees	78615
#7	MeSH descriptor: [Adult] explode all trees	587080
#8	#6 NOT #7	57156
#9	#5 NOT #8	1833
#10	(p*ediatr* OR infant* OR newborn* OR child OR children*):ti	118961
#11	#9 NOT #10 with Cochrane Library publication date Between Jan 2020 and Jan 2023, in Cochrane Reviews	2

Søgestreng for CINAHL

#	Query	Limiters/Expanders	Results
S12	S9 AND S10	Limiters – Published Date: 20200101-20231231; Language: Danish, English, Norwegian, Swedish	76
S11	S9 AND S10		241
S10	(PT (Systematic Review or Meta Analysis)) OR (TX ((systematic N3 (review* or overview* or study or studies or search* or approach*)) or meta analy* or meta-analy* or metaanaly*)) OR ((pooled N1 (data or analys*))) OR (AB (pubmed or medline or embase or cochrane or "web of science" or psycinfo or psychinfo or scopus)))		442,392
S9	S7 NOT S8		3,820
S8	TI p#ediatr* OR infant* OR newborn* OR child OR children*		449,871
S7	S5 NOT ((MH "Child+") NOT (MH "Adult+")))		3,876
S6	(MH "Child+") NOT (MH "Adult+")		576,860
S5	S1 OR S2 OR S3 OR S4		4,472
S4	(colles* OR smith* OR barton* OR wrist) N2 fracture*		1,140

S3	distal N2 (radius OR radial) N2 fracture*)	2,177
S2	(MH "Wrist Fractures+")	695
S1	(MH "Radius Fractures") OR (MH "Radius Fractures, Distal")	2,951

1.1.1 Søgstreng for primærlitteratur

Søgstreng for PubMed

Search	Query	Results
#18	Search: (((((((("Radius Fractures"[Mesh]) OR ("Wrist Injuries"[Mesh])) OR (distal[Title/Abstract] AND (radius[Title/Abstract] OR radial*[Title/Abstract]) AND fracture*[Title/Abstract])) OR (colles fracture*[Title/Abstract] OR colles' fracture*[Title/Abstract] OR wrist fracture*[Title/Abstract])) OR (smith's fracture*[Title/Abstract] OR barton's fracture*[Title/Abstract])) NOT (("Child"[Mesh]) NOT "Adult"[Mesh])) NOT (pediatr*[Title] OR paediatr*[Title] OR infant*[Title] OR newborn*[Title] OR child[Title] OR children*[Title])) AND (((("Controlled Clinical Trial"[Publication Type] OR "Controlled Clinical Trials as Topic"[Mesh])) OR (((random*[Text Word] OR controlled[Text Word] OR crossover[Text Word] OR cross-over[Text Word] OR blind*[Text Word] OR mask*[Text Word])) AND (trial[Text Word] OR trials[Text Word] OR study[Text Word] OR studies[Text Word] OR analys*[Text Word] OR analyz*[Text Word]))) OR rct[Text Word]) OR (((singl*[Text Word] OR doubl*[Text Word] OR tripl*[Text Word])) AND (blind[Text Word] OR mask[Text Word]))) OR placebo[Text Word])) AND (("2022"[Date - Publication] : "2023"[Date - Publication])) AND (Danish[Language] OR English[Language] OR Norwegian[Language] OR Swedish[Language]) Sort by: Publication Date	<u>175</u>
#17	Search: (((((((("Radius Fractures"[Mesh]) OR ("Wrist Injuries"[Mesh])) OR (distal[Title/Abstract] AND (radius[Title/Abstract] OR radial*[Title/Abstract]) AND fracture*[Title/Abstract])) OR (colles fracture*[Title/Abstract] OR colles' fracture*[Title/Abstract] OR wrist fracture*[Title/Abstract])) OR (smith's fracture*[Title/Abstract] OR barton's fracture*[Title/Abstract])) NOT (("Child"[Mesh]) NOT "Adult"[Mesh])) NOT (pediatr*[Title] OR paediatr*[Title] OR infant*[Title] OR newborn*[Title] OR child[Title] OR children*[Title])) AND (((("Controlled Clinical Trial"[Publication Type] OR "Controlled Clinical Trials as Topic"[Mesh])) OR (((random*[Text Word] OR controlled[Text Word] OR crossover[Text Word] OR cross-over[Text Word] OR blind*[Text Word] OR mask*[Text Word])) AND (trial[Text Word] OR trials[Text Word] OR study[Text Word] OR studies[Text Word] OR analys*[Text Word] OR analyz*[Text Word]))) OR rct[Text Word]) OR (((singl*[Text Word] OR doubl*[Text Word] OR tripl*[Text Word])) AND (blind[Text Word] OR mask[Text Word]))) OR placebo[Text Word])) Sort by: Publication Date	<u>1,577</u>
#16	Search: (((("Controlled Clinical Trial"[Publication Type] OR "Controlled Clinical Trials as Topic"[Mesh])) OR (((random*[Text Word] OR controlled[Text Word] OR crossover[Text Word] OR cross-over[Text Word] OR blind*[Text Word] OR mask*[Text Word])) AND (trial[Text Word] OR trials[Text Word] OR study[Text Word] OR studies[Text Word] OR analys*[Text Word] OR analyz*[Text Word]))) OR rct[Text Word]) OR (((singl*[Text Word] OR doubl*[Text Word] OR tripl*[Text Word])) AND (blind[Text Word] OR mask[Text Word]))) OR placebo[Text Word] Sort by: Publication Date	<u>2,205,620</u>

#15	Search: (((((((("Radius Fractures"[Mesh]) OR ("Wrist Injuries"[Mesh])) OR (distal[Title/Abstract] AND (radius[Title/Abstract] OR radial*[Title/Abstract]) AND fracture*[Title/Abstract])) OR (colles fracture*[Title/Abstract] OR colles' fracture*[Title/Abstract] OR wrist fracture*[Title/Abstract])) OR (smith's fracture*[Title/Abstract] OR barton's fracture*[Title/Abstract])) NOT (("Child"[Mesh]) NOT "Adult"[Mesh])) NOT (pediatr*[Title] OR paediatr*[Title] OR infant*[Title] OR newborn*[Title] OR child[Title] OR children*[Title])) AND ("Systematic Review"[Publication Type] OR "Systematic Reviews as Topic"[Mesh] OR systematic review*[Title/Abstract] OR systematic[sb] OR "Meta-Analysis as Topic"[Mesh] OR "Meta-Analysis" [Publication Type] OR metaanalys*[Title/Abstract] OR meta-analys*[Title/Abstract])) AND (("2020"[Date - Publication] : "2023"[Date - Publication]))) AND (Danish[Language] OR English[Language] OR Norwegian[Language] OR Swedish[Language]) Sort by: Publication Date	<u>167</u>
#14	Search: (((((((("Radius Fractures"[Mesh]) OR ("Wrist Injuries"[Mesh])) OR (distal[Title/Abstract] AND (radius[Title/Abstract] OR radial*[Title/Abstract]) AND fracture*[Title/Abstract])) OR (colles fracture*[Title/Abstract] OR colles' fracture*[Title/Abstract] OR wrist fracture*[Title/Abstract])) OR (smith's fracture*[Title/Abstract] OR barton's fracture*[Title/Abstract])) NOT (("Child"[Mesh]) NOT "Adult"[Mesh])) NOT (pediatr*[Title] OR paediatr*[Title] OR infant*[Title] OR newborn*[Title] OR child[Title] OR children*[Title])) AND ("Systematic Review"[Publication Type] OR "Systematic Reviews as Topic"[Mesh] OR systematic review*[Title/Abstract] OR systematic[sb] OR "Meta-Analysis as Topic"[Mesh] OR "Meta-Analysis" [Publication Type] OR metaanalys*[Title/Abstract] OR meta-analys*[Title/Abstract]) Sort by: Publication Date	<u>439</u>
#13	Search: "Systematic Review"[Publication Type] OR "Systematic Reviews as Topic"[Mesh] OR systematic review*[Title/Abstract] OR systematic[sb] OR "Meta-Analysis as Topic"[Mesh] OR "Meta-Analysis" [Publication Type] OR metaanalys*[Title/Abstract] OR meta-analys*[Title/Abstract] Sort by: Publication Date	<u>480,416</u>
#12	Search: (((((((("Radius Fractures"[Mesh]) OR ("Wrist Injuries"[Mesh])) OR (distal[Title/Abstract] AND (radius[Title/Abstract] OR radial*[Title/Abstract]) AND fracture*[Title/Abstract])) OR (colles fracture*[Title/Abstract] OR colles' fracture*[Title/Abstract] OR wrist fracture*[Title/Abstract])) OR (smith's fracture*[Title/Abstract] OR barton's fracture*[Title/Abstract])) NOT (("Child"[Mesh]) NOT "Adult"[Mesh])) NOT (pediatr*[Title] OR paediatr*[Title] OR infant*[Title] OR newborn*[Title] OR child[Title] OR children*[Title]) Sort by: Publication Date	<u>18,607</u>
#11	Search: pediatr*[Title] OR paediatr*[Title] OR infant*[Title] OR newborn*[Title] OR child[Title] OR children*[Title] Sort by: Publication Date	<u>1,209,858</u>
#10	Search: (((((((("Radius Fractures"[Mesh]) OR ("Wrist Injuries"[Mesh])) OR (distal[Title/Abstract] AND (radius[Title/Abstract] OR radial*[Title/Abstract]) AND fracture*[Title/Abstract])) OR (colles fracture*[Title/Abstract] OR colles' fracture*[Title/Abstract] OR wrist fracture*[Title/Abstract])) OR (smith's fracture*[Title/Abstract] OR barton's fracture*[Title/Abstract])) NOT (("Child"[Mesh]) NOT "Adult"[Mesh]) Sort by: Publication Date	<u>18,890</u>
#9	Search: ("Child"[Mesh]) NOT "Adult"[Mesh] Sort by: Most Recent	<u>1,399,578</u>
#8	Search: (((("Radius Fractures"[Mesh]) OR ("Wrist Injuries"[Mesh])) OR (distal[Title/Abstract] AND (radius[Title/Abstract] OR radial*[Title/Abstract]) AND fracture*[Title/Abstract])) OR (colles fracture*[Title/Abstract] OR colles' fracture*[Title/Abstract] OR wrist fracture*[Title/Abstract])) OR (smith's fracture*[Title/Abstract] OR barton's fracture*[Title/Abstract]) Sort by: Publication Date	<u>21,015</u>

#7	Search: smith's fracture*[Title/Abstract] OR barton's fracture*[Title/Abstract] Sort by: Publication Date	<u>79</u>
#5	Search: colles fracture*[Title/Abstract] OR colles' fracture*[Title/Abstract] OR wrist fracture*[Title/Abstract] Sort by: Publication Date	<u>2,237</u>
#3	Search: distal[Title/Abstract] AND (radius[Title/Abstract] OR radial*[Title/Abstract]) AND fracture*[Title/Abstract] Sort by: Publication Date	<u>9,548</u>
#2	Search: "Wrist Injuries"[Mesh] Sort by: Most Recent	<u>7,022</u>
#1	Search: "Radius Fractures"[Mesh] Sort by: Most Recent	<u>11,027</u>

Søgestreng for Embase

No.	Query	Results
#15	#14 NOT ('conference abstract'/it OR 'conference paper'/it OR 'conference review'/it)	638
#14	#7 AND #12 AND ([danish]/lim OR [english]/lim OR [norwegian]/lim OR [swedish]/lim) AND [2022-2023]/py	727
#13	#7 AND #12	4723
#12	'controlled clinical trial'/exp OR 'randomized controlled trial'/exp OR (((random* OR controlled* OR crossover OR 'cross over' OR blind* OR mask*) NEAR/3 (trial* OR study OR studies OR analy*)):ti,ab,de) OR rct:ti,ab,de OR (((single OR double OR triple) NEAR/2 (blind* OR mask*)):ti,ab,de) OR placebo:ti,ab,de	10805057
#11	#10 NOT ('conference abstract'/it OR 'conference paper'/it OR 'conference review'/it)	237
#10	#9 AND ([danish]/lim OR [english]/lim OR [norwegian]/lim OR [swedish]/lim) AND [2020-2023]/py	263
#9	#7 AND #8	708
#8	'systematic review'/exp OR 'meta analysis'/exp OR 'meta analy*':ti,ab,de OR 'meta-analy*':ti,ab,de OR metaanaly*':ti,ab,de OR ((systematic NEAR/3 (review* OR overview* OR study OR studies OR search* OR approach*)):ti,ab,de)	798277
#7	#6 NOT (p\$ediatr*:ti OR infant*:ti OR newborn*:ti OR child:ti OR children*:ti)	17780
#6	#5 NOT ('child'/exp NOT 'adult'/exp)	18086
#5	#1 OR #2 OR #3 OR #4	20001
#4	((colles* OR smith* OR barton* OR wrist) NEAR/2 fracture*):ti,ab,kw	3427
#3	(distal NEAR/2 (radius OR radial) NEAR/2 fracture*):ti,ab,kw	6387
#2	'wrist fracture'/de	3943
#1	'radius fracture'/exp	15543

Søgestreng for Cochrane

ID	Search	Hits
#1	MeSH descriptor: [Radius Fractures] explode all trees	806
#2	MeSH descriptor: [Wrist Injuries] explode all trees	209
#3	(distal NEAR/2 (radius OR radial) NEAR/2 fracture*):ti,ab,kw	1187
#4	((colles* OR smith* OR barton* OR wrist) NEAR/2 fracture*):ti,ab,kw	678
#5	{OR #1-#4}	1906
#6	MeSH descriptor: [Child] explode all trees	78615
#7	MeSH descriptor: [Adult] explode all trees	587080
#8	#6 NOT #7	57156
#9	#5 NOT #8	1833
#10	(p*ediatr* OR infant* OR newborn* OR child OR children*):ti	118961
#11	#9 NOT #10 with Cochrane Library publication date Between Jan 2020 and Jan 2023, in Cochrane Reviews	2
#12	#9 NOT #10 with Publication Year from 2022 to 2023, in Trials	115

Søgestreng for CINAHL

#	Query	Limiters/Expanders	Results
	S9 AND S13	Limiters – Published Date: 20220101-20231231; Language: Danish, English, Norwegian, Swedish	98
	S9 AND S13		1,026
S13	PT Randomized Controlled Trial OR (TX (((random* or control#ed or crossover or cross-over or blind* or mask*) N3 (trial* or study or studies or analy*)) or rct)) OR (TX (placebo* or single-blind* or double-blind* or triple-blind* or ((single or double or triple) N1 (blind* or mask*)))		1,665,772
S12	S9 AND S10	Limiters – Published Date: 20200101-20231231; Language: Danish, English, Norwegian, Swedish	76
S11	S9 AND S10		241
S10	(PT (Systematic Review or Meta Analysis)) OR (TX ((systematic N3 (review* or overview* or study or studies or search* or approach*)) or meta analy* or meta-analy* or metaanaly*)) OR ((pooled N1 (data or analys*))) OR (AB (pubmed or medline or embase or cochrane or "web of science" or psycinfo or psychinfo or scopus))		442,392
S9	S7 NOT S8		3,820

S8	TI p#ediatr* OR infant* OR newborn* OR child OR children*	449,871
S7	S5 NOT ((MH "Child+") NOT (MH "Adult+"))	3,876
S6	(MH "Child+") NOT (MH "Adult+")	576,860
S5	S1 OR S2 OR S3 OR S4	4,472
S4	(colles* OR smith* OR barton* OR wrist) N2 fracture*	1,140
S3	distal N2 (radius OR radial) N2 fracture*	2,177
S2	(MH "Wrist Fractures+")	695
S1	(MH "Radius Fractures") OR (MH "Radius Fractures, Distal")	2,951

1.3 Søgeresultater – Klinisk effekt og sikkerhed

Overblik over systematiske reviews og metaanalyser

Database	Platform	Resultat	Dato
PubMed	PubMed.gov	167	03.10.2023
Embase	Embase.com	237	03.10.2023
Cochrane	Wiley	2	03.10.2023
CINAHL with Full Text	EBSCO	76	03.10.2023
I alt		482	
÷ dubletter vha. EndNote		298	

Overblik over primærlitteratur

Database	Platform	Resultat	Dato
PubMed	PubMed.gov	175	03.10.2023
Embase	Embase.com	638	03.10.2023
Cochrane	Wiley	115	03.10.2023
CINAHL with Full Text	EBSCO	98	03.10.2023
I alt		1026	
÷ dubletter vha. EndNote		788	

1.4 Søgestreng - Patientperspektiv

1.1.2 Søgestreg for systematiske reviews og primærlitteratur

Søgestreg for PubMed

Se-arch	Query	Results
#13	Search: (((((((("Radius Fractures"[Mesh]) OR ("Wrist Injuries"[Mesh])) OR (distal[Title/Abstract] AND (radius[Title/Abstract] OR radial*[Title/Abstract]) AND fracture*[Title/Abstract])) OR (colles fracture*[Title/Abstract] OR colles' fracture*[Title/Abstract] OR wrist fracture*[Title/Abstract])) OR (smith's fracture*[Title/Abstract] OR barton's fracture*[Title/Abstract])) NOT (("Child"[Mesh]) NOT "Adult"[Mesh])) NOT (pediatr*[Title] OR paediatr*[Title] OR infant*[Title] OR newborn*[Title] OR child[Title] OR children*[Title])) AND ("Attitude to Health"[Majr] OR Patient Participation[Majr] OR Patient Preference[Majr] OR Patient Satisfaction[Majr] OR Adaptation, Psychological[Majr] OR "Quality of Life"[Majr] OR "Health Education"[Majr] OR "Qualitative Research"[Majr] OR "Interviews as Topic"[Majr] OR "Focus Groups"[Majr] OR "patient participation"[Title/Abstract:~3] OR "patient experience"[Title/Abstract:~3] OR "patient experiences"[Title/Abstract:~3] OR "patient experiencing"[Title/Abstract:~3] OR "patient attitude"[Title/Abstract:~3] OR "patient attitudes"[Title/Abstract:~3] OR "patient involvement"[Title/Abstract:~3] OR "patient perspective"[Title/Abstract:~3] OR "patient perspectives"[Title/Abstract:~3] OR "patient desire"[Title/Abstract:~3] OR "patient desires"[Title/Abstract:~3] OR "patient view"[Title/Abstract:~3] OR "patient views"[Title/Abstract:~3] OR "patient preference"[Title/Abstract:~3] OR "patient preferences"[Title/Abstract:~3] OR "patient acceptance"[Title/Abstract:~3] OR "patient choice"[Title/Abstract:~3] OR "patient choices"[Title/Abstract:~3] OR "patient decision"[Title/Abstract:~3] OR "patient decisions"[Title/Abstract:~3] OR "patient opinion"[Title/Abstract:~3] OR "patient opinions"[Title/Abstract:~3] OR "patient priority"[Title/Abstract:~3] OR "patient priorities"[Title/Abstract:~3] OR "patient concern"[Title/Abstract:~3] OR "patient concerns"[Title/Abstract:~3] OR "patient empowerment"[Title/Abstract:~3] OR "patient collaboration"[Title/Abstract:~3] OR "patient satisfaction"[Title/Abstract:~3] OR "patient perception"[Title/Abstract:~3] OR "patient perceptions"[Title/Abstract:~3] OR "patient expectations"[Title/Abstract:~3] OR "patient expects"[Title/Abstract:~3] OR "patient adherence"[Title/Abstract:~3] OR "patient compliance"[Title/Abstract:~3] OR "patient value"[Title/Abstract:~3] OR "patient values"[Title/Abstract:~3] OR "patient focus"[Title/Abstract:~3] OR "patient need"[Title/Abstract:~3] OR "patient needs"[Title/Abstract:~3] OR partner[Title] OR partners[Title] OR couple*[Title] OR family[Title] OR families[Title])) AND (("2013"[Date - Publication] : "2023"[Date - Publication])) AND (Danish[Language] OR English[Language] OR Norwegian[Language] OR Swedish[Language]) Sort by: Publication Date	259
#12	Search: (((((((("Radius Fractures"[Mesh]) OR ("Wrist Injuries"[Mesh])) OR (distal[Title/Abstract] AND (radius[Title/Abstract] OR radial*[Title/Abstract]) AND fracture*[Title/Abstract])) OR (colles fracture*[Title/Abstract] OR colles' fracture*[Title/Abstract] OR wrist fracture*[Title/Abstract])) OR (smith's fracture*[Title/Abstract] OR barton's fracture*[Title/Abstract])) NOT (("Child"[Mesh]) NOT "Adult"[Mesh])) NOT (pediatr*[Title] OR paediatr*[Title] OR infant*[Title] OR newborn*[Title] OR child[Title] OR children*[Title])) AND ("Attitude to Health"[Majr] OR Patient Participation[Majr] OR Patient Preference[Majr] OR Patient Satisfaction[Majr] OR Adaptation, Psychological[Majr] OR "Quality of Life"[Majr] OR "Health Education"[Majr] OR "Qualitative Research"[Majr] OR "Interviews as Topic"[Majr] OR "Focus Groups"[Majr] OR "patient participation"[Title/Abstract:~3] OR "patient experience"[Title/Abstract:~3] OR	485

"patient experiences"[Title/Abstract:~3] OR "patient experiencing"[Title/Abstract:~3] OR "patient attitude"[Title/Abstract:~3] OR "patient attitudes"[Title/Abstract:~3] OR "patient involvement"[Title/Abstract:~3] OR "patient perspective"[Title/Abstract:~3] OR "patient perspectives"[Title/Abstract:~3] OR "patient desire"[Title/Abstract:~3] OR "patient desires"[Title/Abstract:~3] OR "patient view"[Title/Abstract:~3] OR "patient views"[Title/Abstract:~3] OR "patient preference"[Title/Abstract:~3] OR "patient preferences"[Title/Abstract:~3] OR "patient acceptance"[Title/Abstract:~3] OR "patient choice"[Title/Abstract:~3] OR "patient choices"[Title/Abstract:~3] OR "patient decision"[Title/Abstract:~3] OR "patient decisions"[Title/Abstract:~3] OR "patient opinion"[Title/Abstract:~3] OR "patient opinions"[Title/Abstract:~3] OR "patient priority"[Title/Abstract:~3] OR "patient priorities"[Title/Abstract:~3] OR "patient concern"[Title/Abstract:~3] OR "patient concerns"[Title/Abstract:~3] OR "patient empowerment"[Title/Abstract:~3] OR "patient collaboration"[Title/Abstract:~3] OR "patient satisfaction"[Title/Abstract:~3] OR "patient perception"[Title/Abstract:~3] OR "patient perceptions"[Title/Abstract:~3] OR "patient expectations"[Title/Abstract:~3] OR "patient expects"[Title/Abstract:~3] OR "patient adherence"[Title/Abstract:~3] OR "patient compliance"[Title/Abstract:~3] OR "patient value"[Title/Abstract:~3] OR "patient values"[Title/Abstract:~3] OR "patient focus"[Title/Abstract:~3] OR "patient need"[Title/Abstract:~3] OR "patient needs"[Title/Abstract:~3] OR partner[Title] OR partners[Title] OR couple*[Title] OR family[Title] OR families[Title]) Sort by: Publication Date

#11	Search: "Attitude to Health"[Majr] OR Patient Participation[Majr] OR Patient Preference[Majr] OR Patient Satisfaction[Majr] OR Adaptation, Psychological[Majr] OR "Quality of Life"[Majr] OR "Health Education"[Majr] OR "Qualitative Research"[Majr] OR "Interviews as Topic"[Majr] OR "Focus Groups"[Majr] OR "patient participation"[Title/Abstract:~3] OR "patient experience"[Title/Abstract:~3] OR "patient experiences"[Title/Abstract:~3] OR "patient experiencing"[Title/Abstract:~3] OR "patient attitude"[Title/Abstract:~3] OR "patient attitudes"[Title/Abstract:~3] OR "patient involvement"[Title/Abstract:~3] OR "patient perspective"[Title/Abstract:~3] OR "patient perspectives"[Title/Abstract:~3] OR "patient desire"[Title/Abstract:~3] OR "patient desires"[Title/Abstract:~3] OR "patient view"[Title/Abstract:~3] OR "patient views"[Title/Abstract:~3] OR "patient preference"[Title/Abstract:~3] OR "patient preferences"[Title/Abstract:~3] OR "patient acceptance"[Title/Abstract:~3] OR "patient choice"[Title/Abstract:~3] OR "patient choices"[Title/Abstract:~3] OR "patient decision"[Title/Abstract:~3] OR "patient decisions"[Title/Abstract:~3] OR "patient opinion"[Title/Abstract:~3] OR "patient opinions"[Title/Abstract:~3] OR "patient priority"[Title/Abstract:~3] OR "patient priorities"[Title/Abstract:~3] OR "patient concern"[Title/Abstract:~3] OR "patient concerns"[Title/Abstract:~3] OR "patient empowerment"[Title/Abstract:~3] OR "patient collaboration"[Title/Abstract:~3] OR "patient satisfaction"[Title/Abstract:~3] OR "patient perception"[Title/Abstract:~3] OR "patient perceptions"[Title/Abstract:~3] OR "patient expectations"[Title/Abstract:~3] OR "patient expects"[Title/Abstract:~3] OR "patient adherence"[Title/Abstract:~3] OR "patient compliance"[Title/Abstract:~3] OR "patient value"[Title/Abstract:~3] OR "patient values"[Title/Abstract:~3] OR "patient focus"[Title/Abstract:~3] OR "patient need"[Title/Abstract:~3] OR "patient needs"[Title/Abstract:~3] OR partner[Title] OR partners[Title] OR couple*[Title] OR family[Title] OR families[Title] Sort by: Publication Date	1,045,950
-----	-----------------------------------------------------------------------------------------------------------------------------------------------------------------------------------------------------------------------------------------------------------------------------------------------------------------------------------------------------------------------------------------------------------------------------------------------------------------------------------------------------------------------------------------------------------------------------------------------------------------------------------------------------------------------------------------------------------------------------------------------------------------------------------------------------------------------------------------------------------------------------------------------------------------------------------------------------------------------------------------------------------------------------------------------------------------------------------------------------------------------------------------------------------------------------------------------------------------------------------------------------------------------------------------------------------------------------------------------------------------------------------------------------------------------------------------------------------------------------------------------------------------------------------------------------------------------------------------------------------------------------------------------------------------------------------------------------------------------------------------------------------------------------------------------------------------------------------------------------------------------------------------------------------------------------------------------------------------------------------------------------------------------------------------------------------------------------------------------------------------------------------------------------------------------	-----------

#10 Search: ((((((("Radius Fractures"[Mesh]) OR ("Wrist Injuries"[Mesh])) OR (distal[Title/Abstract] AND (radius[Title/Abstract] OR radial*[Title/Abstract]) AND fracture*[Title/Abstract])) OR (colles fracture*[Title/Abstract] OR colles' fracture*[Title/Abstract] OR wrist fracture*[Title/Abstract])) OR (smith's fracture*[Title/Abstract] OR barton's fracture*[Title/Abstract])) NOT (("Child"[Mesh]) NOT "Adult"[Mesh])) NOT (pediatr*[Title] OR paediatr*[Title] OR infant*[Title] OR newborn*[Title] OR child[Title] OR children*[Title]) Sort by: Publication Date

#9	Search: pediatr*[Title] OR paediatr*[Title] OR infant*[Title] OR newborn*[Title] OR child[Title] OR children*[Title] Sort by: Publication Date	1,209,858
#8	Search: (((("Radius Fractures"[Mesh]) OR ("Wrist Injuries"[Mesh])) OR (distal[Title/Abstract] AND (radius[Title/Abstract] OR radial*[Title/Abstract]) AND fracture*[Title/Abstract])) OR (colles fracture*[Title/Abstract] OR colles' fracture*[Title/Abstract] OR wrist fracture*[Title/Abstract])) OR (smith's fracture*[Title/Abstract] OR barton's fracture*[Title/Abstract])) NOT (("Child"[Mesh]) NOT "Adult"[Mesh]) Sort by: Publication Date	18,890
#7	Search: ("Child"[Mesh]) NOT "Adult"[Mesh] Sort by: Most Recent	1,399,578
#6	Search: (((("Radius Fractures"[Mesh]) OR ("Wrist Injuries"[Mesh])) OR (distal[Title/Abstract] AND (radius[Title/Abstract] OR radial*[Title/Abstract]) AND fracture*[Title/Abstract])) OR (colles fracture*[Title/Abstract] OR colles' fracture*[Title/Abstract] OR wrist fracture*[Title/Abstract])) OR (smith's fracture*[Title/Abstract] OR barton's fracture*[Title/Abstract]) Sort by: Publication Date	21,015
#5	Search: smith's fracture*[Title/Abstract] OR barton's fracture*[Title/Abstract] Sort by: Publication Date	79
#4	Search: colles fracture*[Title/Abstract] OR colles' fracture*[Title/Abstract] OR wrist fracture*[Title/Abstract] Sort by: Publication Date	2,237
#3	Search: distal[Title/Abstract] AND (radius[Title/Abstract] OR radial*[Title/Abstract]) AND fracture*[Title/Abstract] Sort by: Publication Date	9,548
#2	Search: "Wrist Injuries"[Mesh] Sort by: Most Recent	7,022
#1	Search: "Radius Fractures"[Mesh] Sort by: Most Recent	11,027

Søgestreng for Embase

No.	Query	Results
#11	#10 NOT ('conference abstract'/it OR 'conference paper'/it OR 'conference review'/it)	532
#10	#7 AND #8 AND ([danish]/lim OR [english]/lim OR [norwegian]/lim OR [swedish]/lim) AND [2013-2023]/py	640
#9	#7 AND #8	1058
#8	'patient attitude'/exp/mj OR 'psychological adjustment'/exp/mj OR 'quality of life'/exp/mj OR 'patient education'/exp/mj OR 'qualitative research'/exp/mj OR 'interview'/exp/mj OR ((patient* NEAR/3 (participat* OR experienc* OR attitude* OR involve* OR perspective* OR desire* OR view* OR preference* OR accept* OR choice* OR decision* OR opinion* OR priorit* OR concern* OR empower* OR collaborat* OR satisfact* OR perception* OR expect* OR adherence OR compliance OR value* OR focus)):ab,ti) OR partner:ti OR partners:ti OR couple*:ti OR family:ti OR families:ti	1527851
#7	#6 NOT (p\$ediatr*:ti OR infant*:ti OR newborn*:ti OR child:ti OR children*:ti)	17780
#6	#5 NOT ('child'/exp NOT 'adult'/exp)	18086
#5	#1 OR #2 OR #3 OR #4	20001
#4	((colles* OR smith* OR barton* OR wrist) NEAR/2 fracture*):ti,ab,kw	3427

#3	(distal NEAR/2 (radius OR radial) NEAR/2 fracture*):ti,ab,kw	6387
#2	'wrist fracture'/de	3943
#1	'radius fracture'/exp	15543

Søgestreng for CINAHL

#	Query	Limiters/Expanders	Results
S13	S9 AND S10	Limiters - Published Date: 20130101-20231231; Language: Danish, English, Norwegian, Swedish	181
S12	S9 AND S10		274
S11	S9 AND S10		274
S10	(((MM "Attitude to Health+") OR (MM "Attitude to Illness+")) OR (MM "Consumer Participation") OR (MM "Adaptation, Psychological+") OR (MM "Health Knowledge") OR (MM "Quality of Life+") OR (MM "Patient Education+") OR ((MM "Qualitative Studies+") OR (MM "Interviews+") OR (MM "Focus Groups")) OR (TI (patient* N3 (participat* OR experienc* OR attitude* OR involve* OR perspective* OR desire* OR view* OR preference* OR accept* OR choice* OR decision* OR opinion* OR priorit* OR concern* OR empower* OR collaborat* OR satisfact* OR perception* OR expect* OR adherence OR compliance OR value* OR focus OR need*)) OR AB (patient* N3 (participat* OR experienc* OR attitude* OR involve* OR perspective* OR desire* OR view* OR preference* OR accept* OR choice* OR decision* OR opinion* OR priorit* OR concern* OR empower* OR collaborat* OR satisfact* OR perception* OR expect* OR adherence OR compliance OR value* OR focus)))) OR TI (partner OR partners OR couple* OR family OR families)	507,494	
S9	S7 NOT S8		3,820
S8	TI p#ediatr* OR infant* OR newborn* OR child OR children*		449,871
S7	S5 NOT ((MH "Child+") NOT (MH "Adult+"))		3,876
S6	(MH "Child+") NOT (MH "Adult+")		576,860
S5	S1 OR S2 OR S3 OR S4		4,472
S4	(colles* OR smith* OR barton* OR wrist) N2 fracture*		1,140
S3	distal N2 (radius OR radial) N2 fracture*		2,177
S2	(MH "Wrist Fractures+")		695
S1	(MH "Radius Fractures") OR (MH "Radius Fractures, Distal")		2,951

Søgestreng for PsycINFO

#	Query	Results
9	8 AND Publication Type: Peer Reviewed Journal	24
8	7 AND Year: 2013 To 2023	26
7	5 AND 6	35

6 Index Terms: {Client Participation} OR {Health Attitudes} OR {Mental Health (Attitudes Toward)} OR {Physical Illness (Attitudes Toward)} OR {Consumer Satisfaction} OR {Client Satisfaction} OR {Emotional Adjustment} OR {Health Knowledge} OR {Client Participation} OR {Health Attitudes} OR {Mental Health (Attitudes Toward)} OR {Physical Illness (Attitudes Toward)} OR {Consumer Satisfaction} OR {Client Satisfaction} OR {Emotional Adjustment} OR {Health Knowledge} OR {Quality of Life} OR {Health Related Quality of Life} OR {Quality of Work Life} OR {Client Education} OR {Qualitative Methods} OR Title: patient* NEAR/3 (Title: participat* OR Title: experienc* OR Title: attitude* OR Title: involve* OR Title: perspective* OR Title: desir* OR Title: view* OR Title: preference* OR Title: accept* OR Title: choice* OR Title: decision* OR Title: opinion* OR Title: priorit* OR Title: concern* OR Title: empower* OR Title: satisfact* OR Title: collaborat* OR Title: perception* OR Title: expect* OR Title: adherence OR Title: compliance OR Title: value* OR Title: focus) OR Abstract: patient* NEAR/3 (Abstract: participat* OR Abstract: experienc* OR Abstract: attitude* OR Abstract: involve* OR Abstract: perspective* OR Abstract: desir* OR Abstract: view* OR Abstract: preference* OR Abstract: accept* OR Abstract: choice* OR Abstract: decision* OR Abstract: opinion* OR Abstract: priorit* OR Abstract: concern* OR Abstract: empower* OR Abstract: satisfact* OR Abstract: collaborat* OR Abstract: perception* OR Abstract: expect* OR Abstract: adherence OR Abstract: compliance OR Abstract: value* OR Abstract: focus) OR Title: partner OR Title: partners OR Title: couple* OR Title: family OR Title: families
 Search Databases: APA PsycInfo, APA PsycArticles, APA PsycTests, APA PsycTherapy

5	3 NOT 4	82
4	Title: pediatr* OR Title: paediatr* OR Title: infant* OR Title: newborn* OR Title: child OR Title: children* Search Databases: APA PsycInfo, APA PsycArticles, APA PsycTests, APA PsycTherapy	386295
3	#1 OR #2	83
2	(Title: colles* OR Title: smith* OR Title: barton* OR Title: wrist) NEAR/2 Title: fracture* OR (Abstract: colles* OR Abstract: smith* OR Abstract: barton* OR Abstract: wrist) NEAR/2 Abstract: fracture* OR (Keywords: colles* OR Keywords: smith* OR Keywords: barton* OR Keywords: wrist) NEAR/2 Keywords: fracture* Search Databases: APA PsycInfo, APA PsycArticles, APA PsycTests, APA PsycTherapy	43
1	Title: distal NEAR/2 (Title: radius OR Title: radial) NEAR/2 Title: fracture*) OR Abstract: distal NEAR/2 (Abstract: radius OR Abstract: radial) NEAR/2 Abstract: fracture*) OR Keywords: distal NEAR/2 (Keywords: radius OR Keywords: radial) NEAR/2 Keywords: fracture*) Search Databases: APA PsycInfo, APA PsycArticles, APA PsycTests, APA PsycTherapy	43

1.5 Søgeresultater - Patientperspektiv

Overblik over systematiske reviews og primærlitteratur

Database	Platform	Resultat	Dato
PubMed	PubMed.gov	259	03.10.2023

Embase	Embase.com	532	03.10.2023
CINAHL with Full Text	EBSCO	181	03.10.2023
PsycINFO	APA	24	03.10.2023
I alt		996	
÷ dubletter vha. EndNote		710	

1.6 Søgestreng – Organisatoriske implikationer

1.1.3 Søgestreg for systematiske reviews og primærlitteratur

Søgestreg for PubMed

Se-arch	Query	Results
#31	Search: (((((((("Radius Fractures"[Mesh]) OR ("Wrist Injuries"[Mesh])) OR (distal[Title/Abstract] AND (radius[Title/Abstract] OR radial*[Title/Abstract]) AND fracture*[Title/Abstract])) OR (colles fracture*[Title/Abstract] OR colles' fracture*[Title/Abstract] OR wrist fracture*[Title/Abstract])) OR (smith's fracture*[Title/Abstract] OR barton's fracture*[Title/Abstract])) NOT (("Child"[Mesh]) NOT "Adult"[Mesh])) NOT (pediatr*[Title] OR paediatr*[Title] OR infant*[Title] OR newborn*[Title] OR child[Title] OR children*[Title])) AND (((((((((((((((((((("Patient Care Management"[Mesh:No-Exp]) OR ("Length of Stay"[Mesh])) OR ("Efficiency, Organizational"[Mesh])) OR (Health Workforce / organization & administration[Mesh])) OR ("Organizational Innovation"[Mesh])) OR (Organizational Culture[Mesh])) OR ("Change Management"[Mesh])) OR ("Professional Role"[Mesh])) OR ("Health Plan Implementation"[Mesh])) OR ("Staff Development"[Mesh])) OR ("Competency-Based Education"[Mesh])) OR ("Education, Continuing"[Mesh])) OR ("Primary Health Care"[Mesh])) OR ("Capacity Building"[Mesh])) OR ("Home Care Services"[Mesh])) OR (cross-sector*[Title/Abstract]) OR (surgical capacit*[Title/Abstract]) OR (capacity assessment*[Title/Abstract]) OR (home care[Title/Abstract]) OR (municipal*[Title/Abstract]) OR (care transition*[Title/Abstract]) OR (home nurse*[Title/Abstract]) OR (process description*[Title/Abstract] OR course description*[Title/Abstract]) OR (clinical pathway*[Title/Abstract] OR patient pathway*[Title/Abstract])) OR (organizational[Title/Abstract] OR organisational[Title/Abstract]) OR (hospitalization*[Title/Abstract]) OR (education[Title/Abstract])) AND (("2013"[Date - Publication] : "2023"[Date - Publication])) AND (Danish[Language] OR English[Language] OR Norwegian[Language] OR Swedish[Language]) Sort by: Publication Date	195
#30	Search: (((((((("Radius Fractures"[Mesh]) OR ("Wrist Injuries"[Mesh])) OR (distal[Title/Abstract] AND (radius[Title/Abstract] OR radial*[Title/Abstract]) AND fracture*[Title/Abstract])) OR (colles fracture*[Title/Abstract] OR colles' fracture*[Title/Abstract] OR wrist fracture*[Title/Abstract])) OR (smith's fracture*[Title/Abstract] OR barton's fracture*[Title/Abstract])) NOT (("Child"[Mesh]) NOT "Adult"[Mesh])) NOT (pediatr*[Title] OR paediatr*[Title] OR infant*[Title] OR newborn*[Title] OR child[Title] OR children*[Title])) AND (((((((((((((((((((("Patient Care Management"[Mesh:No-Exp]) OR ("Length of Stay"[Mesh])) OR ("Efficiency, Organizational"[Mesh])) OR (Health Workforce / organization & administration[Mesh])) OR ("Organizational Innovation"[Mesh])) OR (Organizational Culture[Mesh])) OR ("Change Management"[Mesh])) OR ("Professional Role"[Mesh])) OR ("Health Plan Implementation"[Mesh])) OR ("Staff Development"[Mesh])) OR ("Competency-Based	

Education"[Mesh])) OR ("Education, Continuing"[Mesh])) OR ("Primary Health Care"[Mesh])) OR ("Capacity Building"[Mesh])) OR ("Home Care Services"[Mesh])) OR (cross-sector*[Title/Abstract])) OR (surgical capacit*[Title/Abstract])) OR (capacity assessment*[Title/Abstract])) OR (home care[Title/Abstract])) OR (municipal*[Title/Abstract])) OR (care transition*[Title/Abstract])) OR (home nurse*[Title/Abstract])) OR (process description*[Title/Abstract] OR course description*[Title/Abstract])) OR (clinical pathway*[Title/Abstract] OR patient pathway*[Title/Abstract])) OR (organizational[Title/Abstract] OR organisational[Title/Abstract])) OR (hospitalization*[Title/Abstract])) OR (education[Title/Abstract])) Sort by: Publication Date

#29	Search: (((((((((((((((((((((((("Patient Care Management"[Mesh:NoExp] OR ("Length of Stay"[Mesh])) OR ("Efficiency, Organizational"[Mesh])) OR (Health Workforce / organization & administration[Mesh])) OR ("Organizational Innovation"[Mesh])) OR (Organizational Culture[Mesh])) OR ("Change Management"[Mesh])) OR ("Professional Role"[Mesh])) OR ("Health Plan Implementation"[Mesh])) OR ("Staff Development"[Mesh])) OR ("Competency-Based Education"[Mesh])) OR ("Education, Continuing"[Mesh])) OR ("Primary Health Care"[Mesh])) OR ("Capacity Building"[Mesh])) OR ("Home Care Services"[Mesh])) OR (cross-sector*[Title/Abstract])) OR (surgical capacit*[Title/Abstract])) OR (capacity assessment*[Title/Abstract])) OR (home care[Title/Abstract])) OR (municipal*[Title/Abstract])) OR (care transition*[Title/Abstract])) OR (home nurse*[Title/Abstract])) OR (process description*[Title/Abstract] OR course description*[Title/Abstract])) OR (clinical pathway*[Title/Abstract] OR patient pathway*[Title/Abstract])) OR (organizational[Title/Abstract] OR organisational[Title/Abstract])) OR (hospitalization*[Title/Abstract])) OR (education[Title/Abstract])) Sort by: Publication Date	1,397,878
#28	Search: education[Title/Abstract] Sort by: Publication Date	625,096
#27	Search: hospitalization*[Title/Abstract] Sort by: Publication Date	200,455
#26	Search: organizational[Title/Abstract] OR organisational[Title/Abstract] Sort by: Publication Date	75,214
#25	Search: clinical pathway*[Title/Abstract] OR patient pathway*[Title/Abstract] Sort by: Publication Date	5,926
#24	Search: process description*[Title/Abstract] OR course description*[Title/Abstract] Sort by: Publication Date	298
#23	Search: home nurse*[Title/Abstract] Sort by: Publication Date	399
#22	Search: care transition*[Title/Abstract] Sort by: Publication Date	2,756
#21	Search: municipal*[Title/Abstract] Sort by: Publication Date	53,194
#20	Search: home care[Title/Abstract] Sort by: Publication Date	22,312
#19	Search: capacity assessment*[Title/Abstract] Sort by: Publication Date	918
#18	Search: surgical capacit*[Title/Abstract] Sort by: Publication Date	414
#17	Search: cross-sector*[Title/Abstract] Sort by: Publication Date	2,005
#16	Search: "Home Care Services"[Mesh] Sort by: Most Recent	50,982
#15	Search: "Capacity Building"[Mesh] Sort by: Most Recent	3,441
#14	Search: "Primary Health Care"[Mesh] Sort by: Publication Date	192,683
#13	Search: "Education, Continuing"[Mesh] Sort by: Publication Date	62,726

#12	Search: "Competency-Based Education"[Mesh] Sort by: Publication Date	4,626
#11	Search: "Staff Development"[Mesh] Sort by: Most Recent	9,871
#10	Search: "Health Plan Implementation"[Mesh] Sort by: Publication Date	6,632
#9	Search: "Professional Role"[Mesh] Sort by: Publication Date	89,272
#8	Search: "Change Management"[Mesh] Sort by: Publication Date	208
#7	Search: Organizational Culture[Mesh] Sort by: Publication Date	19,034
#6	Search: "Organizational Innovation"[Mesh] Sort by: Publication Date	27,812
#5	Search: Health Workforce / organization & administration[Mesh] Sort by: Publication Date	3,345
#4	Search: "Efficiency, Organizational"[Mesh] Sort by: Most Recent	22,434
#3	Search: "Length of Stay"[Mesh] Sort by: Publication Date	102,959
#2	Search: "Patient Care Management"[Mesh:NoExp] Sort by: Publication Date	4,743
#1	Search: ((((((("Radius Fractures"[Mesh]) OR ("Wrist Injuries"[Mesh])) OR (distal[Title/Abstract] AND (radius[Title/Abstract] OR radial*[Title/Abstract]) AND fracture*[Title/Abstract])) OR (colles fracture*[Title/Abstract] OR colles' fracture*[Title/Abstract] OR wrist fracture*[Title/Abstract])) OR (smith's fracture*[Title/Abstract] OR barton's fracture*[Title/Abstract])) NOT (("Child"[Mesh]) NOT "Adult"[Mesh])) NOT (pediatr*[Title] OR paediatr*[Title] OR infant*[Title] OR newborn*[Title] OR child[Title] OR children*[Title]) Sort by: Publication Date	18,618

Søgestreng for Embase

No.	Query	Results
#24	#23 NOT ('conference abstract'/it OR 'conference paper'/it OR 'conference review'/it)	330
#23	#7 AND #21 AND ([danish]/lim OR [english]/lim OR [norwegian]/lim OR [swedish]/lim) AND [2013-2023]/py	411
#22	#7 AND #21	606
#21	#8 OR #9 OR #10 OR #11 OR #12 OR #13 OR #14 OR #15 OR #16 OR #17 OR #18 OR #19 OR #20	2048092
#20	'capacity building'/mj OR 'primary health care'/exp/mj OR 'home care'/exp/mj	117072
#19	'health care personnel management'/exp/mj	1085
#18	'cross-sector*':ti,ab,kw OR 'surgical capacit*':ti,ab,kw OR 'capacity assessment*':ti,ab,kw OR 'home care':ti,ab,kw OR 'municipal*':ti,ab,kw OR 'care transition*':ti,ab,kw OR 'home nurse*':ti,ab,kw	101037
#17	'process description*':ti,ab,kw OR 'course description*':ti,ab,kw OR 'clinical pathway*':ti,ab,kw OR 'patient pathway*':ti,ab,kw OR organizational:ti,ab,kw OR organizational:ti,ab,kw OR hospitalization*':ti,ab,kw OR education:ti,ab,kw	1238857
#16	'clinical pathway'/mj	3655
#15	'continuing education'/mj	10013

#14	'professional standard'/exp/mj OR 'health care planning'/exp/mj	221060
#13	'organizational structure'/exp/mj OR 'organizational culture'/exp/mj	3473
#12	'health care management'/exp/mj OR 'management'/exp/mj	524089
#11	'length of stay'/mj	14662
#10	'patient care planning'/mj OR 'patient scheduling'/mj	10333
#9	'case management'/mj	5608
#8	'advance care planning'/mj	3392
#7	#6 NOT (p\$ediatr*:ti OR infant*:ti OR newborn*:ti OR child:ti OR children*:ti)	17805
#6	#5 NOT ('child'/exp NOT 'adult'/exp)	18113
#5	#1 OR #2 OR #3 OR #4	20028
#4	((colles* OR smith* OR barton* OR wrist) NEAR/2 fracture*):ti,ab,kw	3434
#3	(distal NEAR/2 (radius OR radial) NEAR/2 fracture*):ti,ab,kw	6396
#2	'wrist fracture'/de	3945
#1	'radius fracture'/exp	15563

Søgestreng for Cochrane

ID	Search	Hits
#1	MeSH descriptor: [Radius Fractures] explode all trees	806
#2	MeSH descriptor: [Wrist Injuries] explode all trees	209
#3	(distal NEAR/2 (radius OR radial) NEAR/2 fracture*):ti,ab,kw	1187
#4	((colles* OR smith* OR barton* OR wrist) NEAR/2 fracture*):ti,ab,kw	678
#5	{OR #1-#4}	1906
#6	MeSH descriptor: [Child] explode all trees	78615
#7	MeSH descriptor: [Adult] explode all trees	587080
#8	#6 NOT #7	57156
#9	#5 NOT #8	1833
#10	(p*ediatr* OR infant* OR newborn* OR child OR children*):ti	118962
#11	#9 NOT #10	1793
#12	MeSH descriptor: [Patient Care Management] this term only	180
#13	MeSH descriptor: [Length of Stay] explode all trees	10083
#14	MeSH descriptor: [Health Workforce] explode all trees and with qualifier(s): [organization & administration - OG]	2
#15	MeSH descriptor: [Organizational Innovation] explode all trees	164

#16	MeSH descriptor: [Organizational Culture] explode all trees	136
#17	MeSH descriptor: [Change Management] explode all trees	11
#18	MeSH descriptor: [Professional Role] explode all trees	1101
#19	MeSH descriptor: [Health Plan Implementation] explode all trees	246
#20	MeSH descriptor: [Competency-Based Education] explode all trees	99
#21	MeSH descriptor: [Staff Development] explode all trees	101
#22	MeSH descriptor: [Efficiency, Organizational] explode all trees	161
#23	MeSH descriptor: [Primary Health Care] explode all trees	10429
#24	MeSH descriptor: [Capacity Building] explode all trees	53
#25	MeSH descriptor: [Home Care Services] explode all trees	2838
#26	((process NEXT description*) OR (course NEXT description*) OR (clinical NEXT pathway*) OR (patient NEXT pathway*) OR organizational OR organisational OR hospitalization* OR education):ti,ab,kw	141939
#27	((cross NEXT sector*) OR (surgical NEXT capacit*) OR (capacity NEXT assessment*) OR home care OR municipal* OR (care NEXT transition*) OR (home NEXT nurse*)):ti,ab,kw	29426
#28	{OR #12-#27}	175985
#29	#11 AND #28 with Cochrane Library publication date Between Jan 2013 and Dec 2023 AND Language: English	72

Søgestreng for CINAHL

#	Query	Limiters/Expanders	Results
S23	S9 AND S21	Limiters - Published Date: 20130101-20231231; Language: Danish, English, Norwegian, Swedish	264
S22	S9 AND S21		485
S21	S10 OR S11 OR S12 OR S13 OR S14 OR S15 OR S16 OR S17 OR S18 OR S19 OR S20		1,965,703
S20	cross sector* OR surgical capacit* OR capacity assessment* OR home care OR municipal* OR care transition* OR home nurse*		38,442
S19	process description* OR course description* OR clinical pathway* OR patient pathway* OR organizational OR organisational OR hospitalization* OR education		960,491
S18	(MH "Home Health Care+")		49,782
S17	(MH "Transitional Care") OR (MH "Continuity of Patient Care+")		24,843
S16	(MH "Primary Health Care")		72,996
S15	MH "Program Implementation"		34,813

S14	MH "Staff Development+"	32,460
S13	MH "Education, Competency-Based" OR MH "Education, Continuing+"	38,364
S12	MH "Management+"	1,240,876
S11	MH "Health Resource Allocation"	10,331
S10	MH "Patient Care Plans+"	12,141
S9	S7 NOT S8	3,826
S8	TI p#ediatr* OR infant* OR newborn* OR child OR children*	450,442
S7	S5 NOT ((MH "Child+") NOT (MH "Adult+"))	3,883
S6	(MH "Child+") NOT (MH "Adult+")	577,278
S5	S1 OR S2 OR S3 OR S4	4,479
S4	(colles* OR smith* OR barton* OR wrist) N2 fracture*	1,141
S3	distal N2 (radius OR radial) N2 fracture*	2,181
S2	(MH "Wrist Fractures+")	697
S1	(MH "Radius Fractures") OR (MH "Radius Fractures, Distal")	2,954

1.7 Søgeresultater – Organisatoriske implikationer

Overblik over systematiske review og primærlitteratur

Database	Platform	Resultat	Dato
PubMed	PubMed.gov	195	09.10.2023
Embase	Embase.com	330	09.10.2023
Cochrane	Wiley	72	09.10.2023
CINAHL with Full Text	EBSCO	264	09.10.2023
I alt		861	
÷ dubletter vha. EndNote		639	

1.8 Søgestreng - Sundhedsøkonomi

1.1.4 Søgestreg for systematiske reviews og primærlitteratur

Søgestreg for PubMed

Search	Query	Results
#13	Search: (((((((("Radius Fractures"[Mesh]) OR ("Wrist Injuries"[Mesh])) OR (distal[Title/Abstract] AND (radius[Title/Abstract] OR radial*[Title/Abstract]) AND fracture*[Title/Abstract])) OR (colles fracture*[Title/Abstract] OR colles' fracture*[Title/Abstract] OR wrist fracture*[Title/Abstract])) OR (smith's fracture*[Title/Abstract] OR barton's fracture*[Title/Abstract])) NOT (("Child"[Mesh]) NOT "Adult"[Mesh])) NOT (pediatr*[Title] OR paediatr*[Title] OR infant*[Title] OR newborn*[Title] OR child[Title] OR children*[Title])) AND ("Economics"[Mesh:NoExp] OR "Costs and Cost Analysis"[mh] OR "Economics, Nursing"[mh] OR "Economics, Medical"[mh] OR "Economics, Pharmaceutical"[mh] OR "Economics, Hospital"[mh] OR "Economics, Dental"[mh] OR "Fees and Charges"[mh] OR "Budgets"[mh] OR budget*[tiab] OR economic*[tiab] OR cost[tiab] OR costs[tiab] OR costly[tiab] OR costing[tiab] OR price[tiab] OR prices[tiab] OR pricing[tiab] OR pharmaco-economic*[tiab] OR "pharmaco-economic**"[tiab] OR expenditure[tiab] OR expenditures[tiab] OR expense[tiab] OR expenses[tiab] OR financial[tiab] OR finance[tiab] OR finances[tiab] OR financed[tiab] OR "value for money"[tiab] OR "monetary value**"[tiab] OR "models, economic"[mh] OR "economic model**"[tiab] OR "markov chains"[mh] OR markov[tiab] OR "monte carlo method"[mh] OR "monte carlo"[tiab] OR "Decision Theory"[mh] OR "decision tree**"[tiab] OR "decision analy**"[tiab] OR "decision model**"[tiab])) AND (("2013"[Date - Publication] : "2023"[Date - Publication]))) AND (Danish[Language] OR English[Language] OR Norwegian[Language] OR Swedish[Language]) Sort by: Publication Date	397
#12	Search: (((((((("Radius Fractures"[Mesh]) OR ("Wrist Injuries"[Mesh])) OR (distal[Title/Abstract] AND (radius[Title/Abstract] OR radial*[Title/Abstract]) AND fracture*[Title/Abstract])) OR (colles fracture*[Title/Abstract] OR colles' fracture*[Title/Abstract] OR wrist fracture*[Title/Abstract])) OR (smith's fracture*[Title/Abstract] OR barton's fracture*[Title/Abstract])) NOT (("Child"[Mesh]) NOT "Adult"[Mesh])) NOT (pediatr*[Title] OR paediatr*[Title] OR infant*[Title] OR newborn*[Title] OR child[Title] OR children*[Title])) AND ("Economics"[Mesh:NoExp] OR "Costs and Cost Analysis"[mh] OR "Economics, Nursing"[mh] OR "Economics, Medical"[mh] OR "Economics, Pharmaceutical"[mh] OR "Economics, Hospital"[mh] OR "Economics, Dental"[mh] OR "Fees and Charges"[mh] OR "Budgets"[mh] OR budget*[tiab] OR economic*[tiab] OR cost[tiab] OR costs[tiab] OR costly[tiab] OR costing[tiab] OR price[tiab] OR prices[tiab] OR pricing[tiab] OR pharmaco-economic*[tiab] OR "pharmaco-economic**"[tiab] OR expenditure[tiab] OR expenditures[tiab] OR expense[tiab] OR expenses[tiab] OR financial[tiab] OR finance[tiab] OR finances[tiab] OR financed[tiab] OR "value for money"[tiab] OR "monetary value**"[tiab] OR "models, economic"[mh] OR "economic model**"[tiab] OR "markov chains"[mh] OR markov[tiab] OR "monte carlo method"[mh] OR "monte carlo"[tiab] OR "Decision Theory"[mh] OR "decision tree**"[tiab] OR "decision analy**"[tiab] OR "decision model**"[tiab]) Sort by: Publication Date	687
#11	Search: "Economics"[Mesh:NoExp] OR "Costs and Cost Analysis"[mh] OR "Economics, Nursing"[mh] OR "Economics, Medical"[mh] OR "Economics, Pharmaceutical"[mh] OR "Economics, Hospital"[mh] OR "Economics, Dental"[mh] OR "Fees and Charges"[mh] OR "Budgets"[mh] OR budget*[tiab] OR economic*[tiab] OR cost[tiab] OR costs[tiab] OR costly[tiab] OR costing[tiab] OR price[tiab] OR prices[tiab] OR pricing[tiab] OR pharmaco-economic*[tiab] OR "pharmaco-economic**"[tiab] OR expenditure[tiab] OR expenditures[tiab] OR expense[tiab] OR expenses[tiab] OR financial[tiab] OR finance[tiab] OR finances[tiab] OR financed[tiab] OR "value for money"[tiab] OR "monetary value**"[tiab] OR "models, economic"[mh] OR "economic model**"[tiab] OR "markov chains"[mh] OR markov[tiab] OR "monte carlo method"[mh] OR "monte carlo"[tiab] OR "Decision Theory"[mh] OR "decision tree**"[tiab] OR "decision analy**"[tiab] OR "decision model**"[tiab] Sort by: Publication Date	1,495,706

#10	Search: (((("Radius Fractures"[Mesh]) OR ("Wrist Injuries"[Mesh])) OR (distal[Title/Abstract] AND (radius[Title/Abstract] OR radial*[Title/Abstract]) AND fracture*[Title/Abstract])) OR (colles fracture*[Title/Abstract] OR colles' fracture*[Title/Abstract] OR wrist fracture*[Title/Abstract])) OR (smith's fracture*[Title/Abstract] OR barton's fracture*[Title/Abstract])) NOT (("Child"[Mesh]) NOT "Adult"[Mesh])) NOT (pediatr*[Title] OR paediatr*[Title] OR infant*[Title] OR newborn*[Title] OR child[Title] OR children*[Title]) Sort by: Publication Date	18,607
#9	Search: pediatr*[Title] OR paediatr*[Title] OR infant*[Title] OR newborn*[Title] OR child[Title] OR children*[Title] Sort by: Publication Date	1,209,858
#8	Search: (((("Radius Fractures"[Mesh]) OR ("Wrist Injuries"[Mesh])) OR (distal[Title/Abstract] AND (radius[Title/Abstract] OR radial*[Title/Abstract]) AND fracture*[Title/Abstract])) OR (colles fracture*[Title/Abstract] OR colles' fracture*[Title/Abstract] OR wrist fracture*[Title/Abstract])) OR (smith's fracture*[Title/Abstract] OR barton's fracture*[Title/Abstract])) NOT (("Child"[Mesh]) NOT "Adult"[Mesh]) Sort by: Publication Date	18,890
#7	Search: ("Child"[Mesh]) NOT "Adult"[Mesh] Sort by: Most Recent	1,399,578
#6	Search: (((("Radius Fractures"[Mesh]) OR ("Wrist Injuries"[Mesh])) OR (distal[Title/Abstract] AND (radius[Title/Abstract] OR radial*[Title/Abstract]) AND fracture*[Title/Abstract])) OR (colles fracture*[Title/Abstract] OR colles' fracture*[Title/Abstract] OR wrist fracture*[Title/Abstract])) OR (smith's fracture*[Title/Abstract] OR barton's fracture*[Title/Abstract]) Sort by: Publication Date	21,015
#5	Search: smith's fracture*[Title/Abstract] OR barton's fracture*[Title/Abstract] Sort by: Publication Date	79
#4	Search: colles fracture*[Title/Abstract] OR colles' fracture*[Title/Abstract] OR wrist fracture*[Title/Abstract] Sort by: Publication Date	2,237
#3	Search: distal[Title/Abstract] AND (radius[Title/Abstract] OR radial*[Title/Abstract]) AND fracture*[Title/Abstract] Sort by: Publication Date	9,548
#2	Search: "Wrist Injuries"[Mesh] Sort by: Most Recent	7,022
#1	Search: "Radius Fractures"[Mesh] Sort by: Most Recent	11,027

Søgestreng for Embase

No.	Query	Results
#11	#10 NOT ('conference abstract'/it OR 'conference paper'/it OR 'conference review'/it)	743
#10	#7 AND #8 AND ([danish]/lim OR [english]/lim OR [norwegian]/lim OR [swedish]/lim) AND [2013-2023]/py	970
#9	#7 AND #8	1651
#8	'economics'/exp OR 'cost'/exp OR 'health economics'/exp OR 'budget'/de OR budget*:ti,ab,kw OR economic*:ti,ab,kw OR cost:ti,ab,kw OR costs:ti,ab,kw OR costly:ti,ab,kw OR costing:ti,ab,kw OR price:ti,ab,kw OR prices:ti,ab,kw OR pricing:ti,ab,kw OR pharmacoeconomic*:ti,ab,kw OR 'pharmaco-economic*':ti,ab,kw OR expenditure:ti,ab,kw OR expenditures:ti,ab,kw OR expense:ti,ab,kw OR expenses:ti,ab,kw OR financial:ti,ab,kw OR finance:ti,ab,kw OR finances:ti,ab,kw OR financed:ti,ab,kw OR ((cost* NEAR/2 (effective* OR utilit* OR benefit* OR minimi* OR analy* OR outcome OR outcomes)):ti,ab,kw) OR ((value NEAR/2 (money OR	3194032

monetary)):ti,ab,kw) OR 'statistical model'/exp OR 'economic model*':ti,ab,kw OR 'probability'/exp OR 'markov chain'/exp OR markov:ti,ab,kw OR 'monte carlo method'/exp OR 'monte carlo':ti,ab,kw OR 'decision theory'/de OR 'decision tree'/de OR ((decision* NEAR/2 (tree* OR analy* OR model*)):ti,ab,kw)

#7	#6 NOT (p#ediatr*:ti OR infant*:ti OR newborn*:ti OR child:ti OR children*:ti)	17780
#6	#5 NOT ('child'/exp NOT 'adult'/exp)	18086
#5	#1 OR #2 OR #3 OR #4	20001
#4	((colles* OR smith* OR barton* OR wrist) NEAR/2 fracture*):ti,ab,kw	3427
#3	(distal NEAR/2 (radius OR radial) NEAR/2 fracture*):ti,ab,kw	6387
#2	'wrist fracture'/de	3943
#1	'radius fracture'/exp	15543

Søgestreng for CINAHL

#	Query	Limiters/Expanders	Results
S12	S9 AND S10	Limiters - Published Date: 20130101-20231231; Language: Danish, English, Norwegian, Swedish	132
S11	S9 AND S10		208
S10	MH "Economics" OR MH "Costs and Cost Analysis+" OR MH "Economic Aspects of Illness" OR MH "Resource Allocation+" OR MH "Economic Value of Life" OR MH "Economics, Pharmaceutical" OR MH "Economics, Dental" OR MH "Fees and Charges+" OR MH "Budgets" OR MH "Decision Trees" OR TI budget* OR TI (economic* OR cost OR costs OR costly OR costing OR price OR prices OR pricing OR pharmacoeconomic* OR "pharmaco-economic*" OR expenditure OR expenditures OR expense OR expenses OR financial OR finance OR finances OR financed) OR TI (cost* N2 (effective* OR utilit* OR benefit* OR minimi* OR analy* OR outcome OR outcomes)) OR TI (value N2 (money OR monetary)) OR TI (markov OR monte carlo) OR TI (decision* N2 (tree* OR analy* OR model*)) OR AB budget* OR AB (economic* OR cost OR costs OR costly OR costing OR price OR prices OR pricing OR pharmacoeconomic* OR "pharmaco-economic*" OR expenditure OR expenditures OR expense OR expenses OR financial OR finance OR finances OR financed) OR AB (cost* N2 (effective* OR utilit* OR benefit* OR minimi* OR analy* OR outcome OR outcomes)) OR AB (value N2 (money OR monetary)) OR AB (markov OR monte carlo) OR AB (decision* N2 (tree* OR analy* OR model*))		464,681
S9	S7 NOT S8		3,820
S8	TI p#ediatr* OR infant* OR newborn* OR child OR children*		449,871
S7	S5 NOT ((MH "Child+") NOT (MH "Adult+"))		3,876
S6	(MH "Child+") NOT (MH "Adult+")		576,860
S5	S1 OR S2 OR S3 OR S4		4,472
S4	(colles* OR smith* OR barton* OR wrist) N2 fracture*		1,140

S3	distal N2 (radius OR radial) N2 fracture*)	2,177
S2	(MH "Wrist Fractures+")	695
S1	(MH "Radius Fractures") OR (MH "Radius Fractures, Distal")	2,951

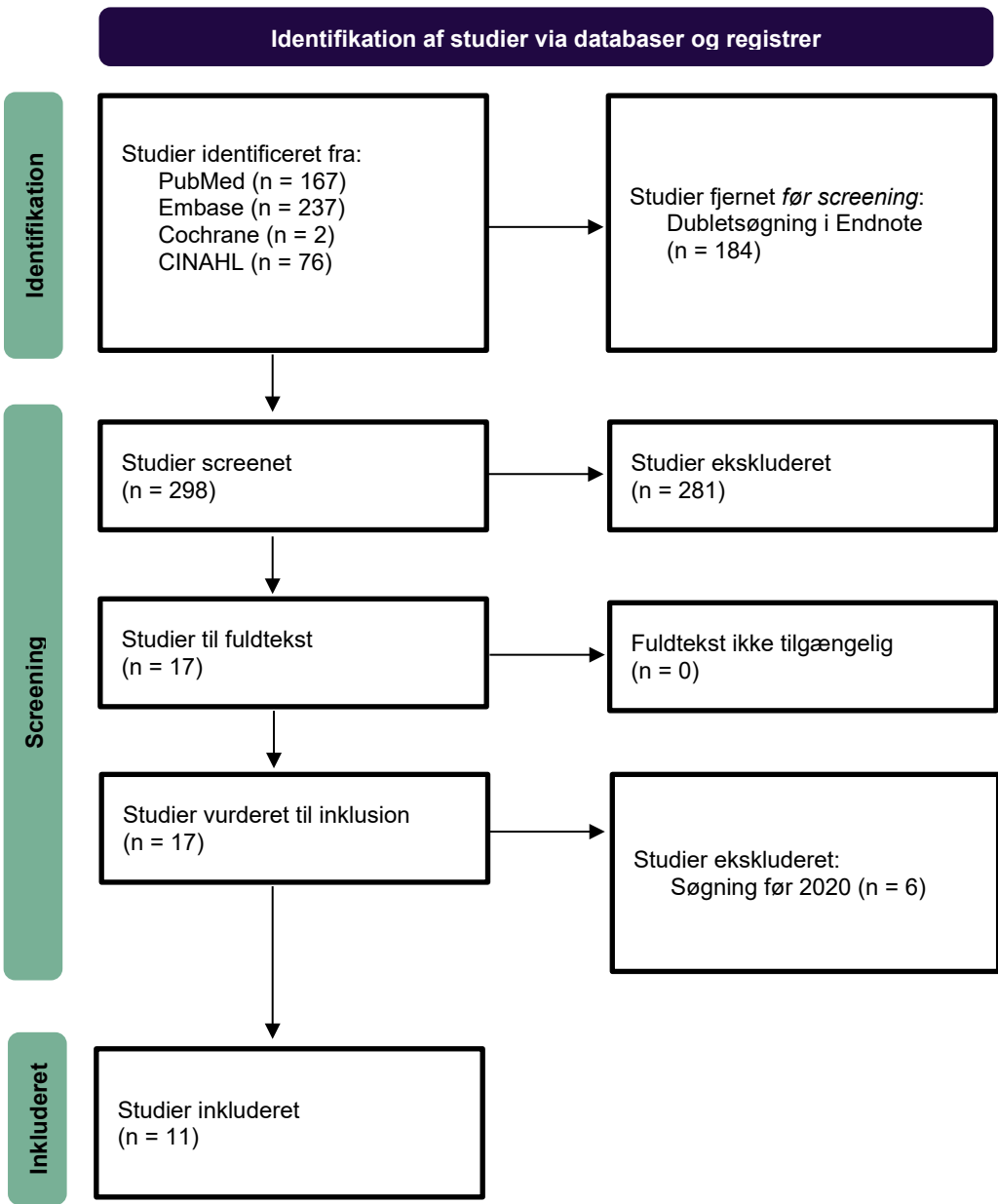
1.9 Søgeresultater - Sundhedsøkonomi

Overblik over systematiske reviews og primærlitteratur

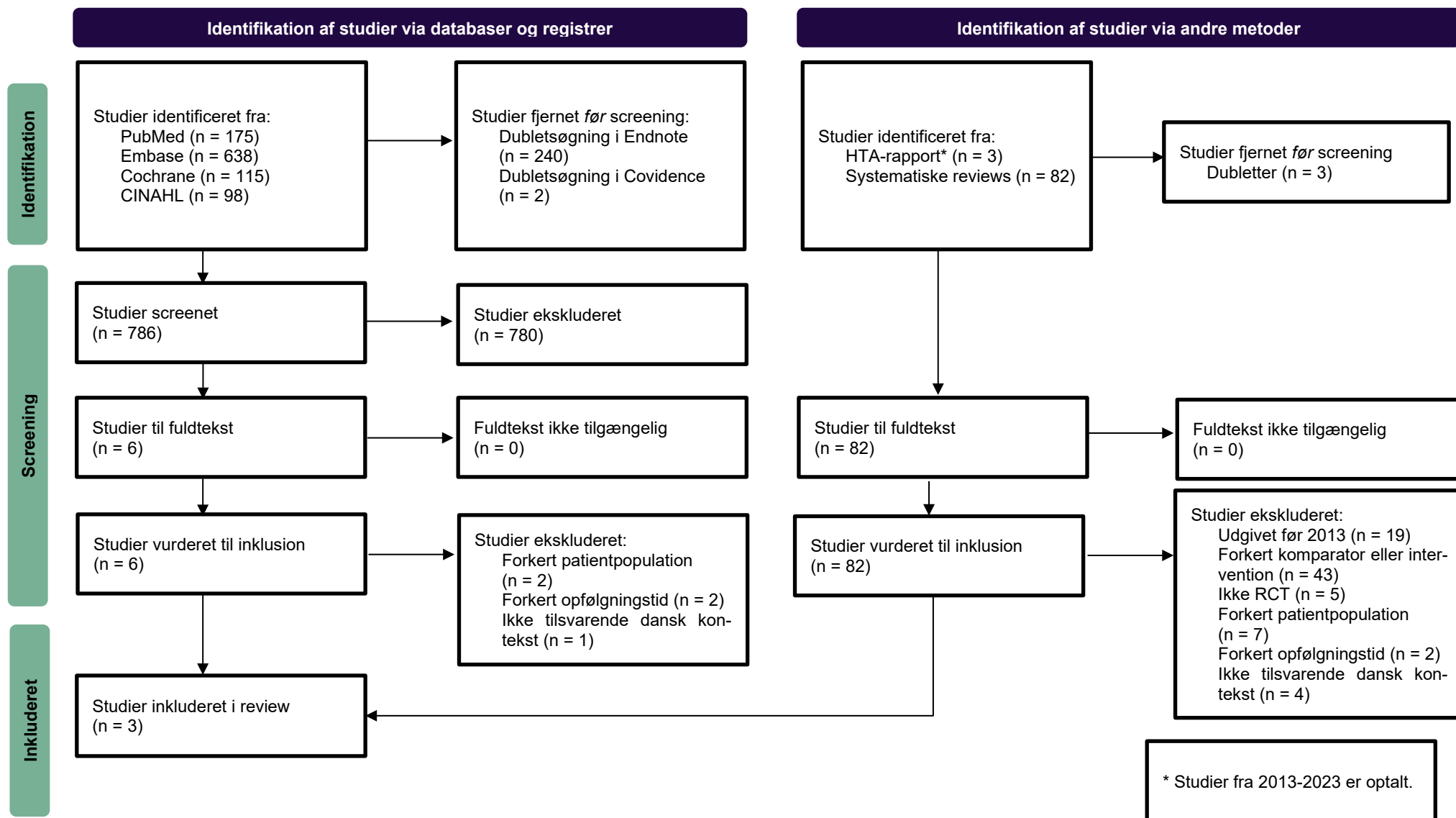
Database	Platform	Resultat	Dato
PubMed	PubMed.gov	397	03.10.2023
Embase	Embase.com	743	03.10.2023
CINAHL with Full Text	EBSCO	132	03.10.2023
I alt		1272	
÷ dubletter vha. EndNote		862	

1.10 Prismadiagrammer

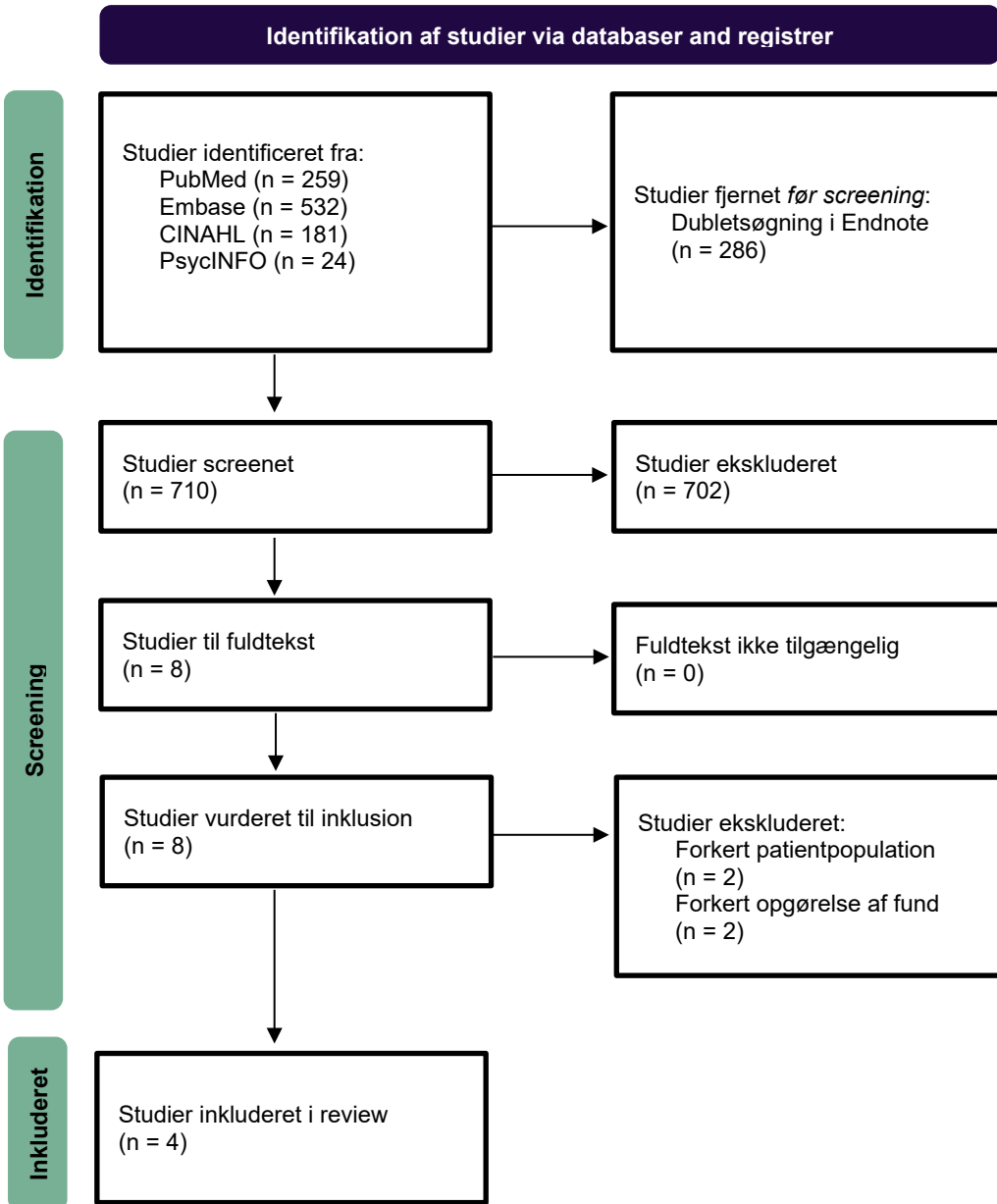
1.10.1 Sekundærlitteratur – Klinisk effekt og sikkerhed



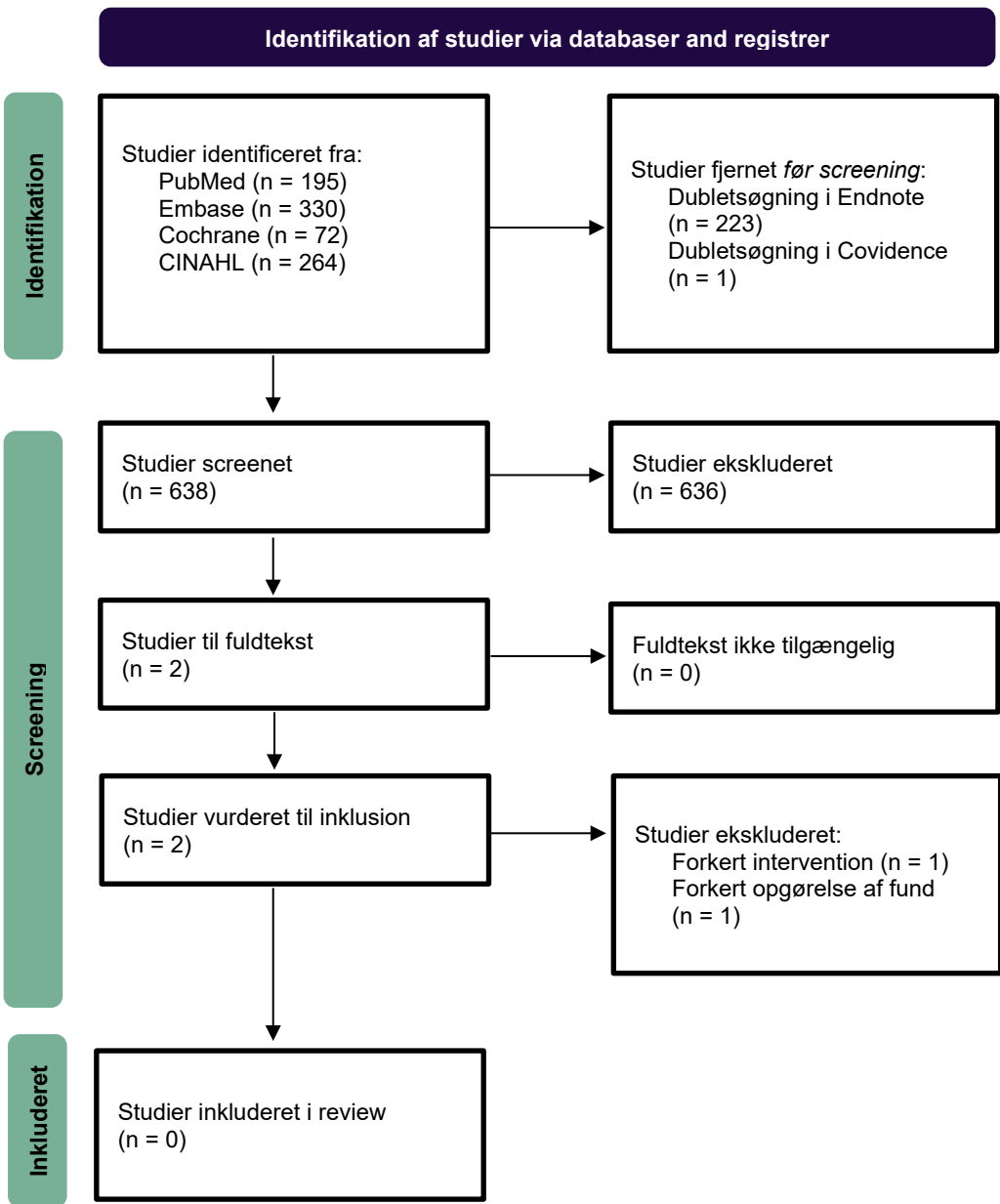
1.10.2 Primærlitteratur – Klinisk effekt og sikkerhed



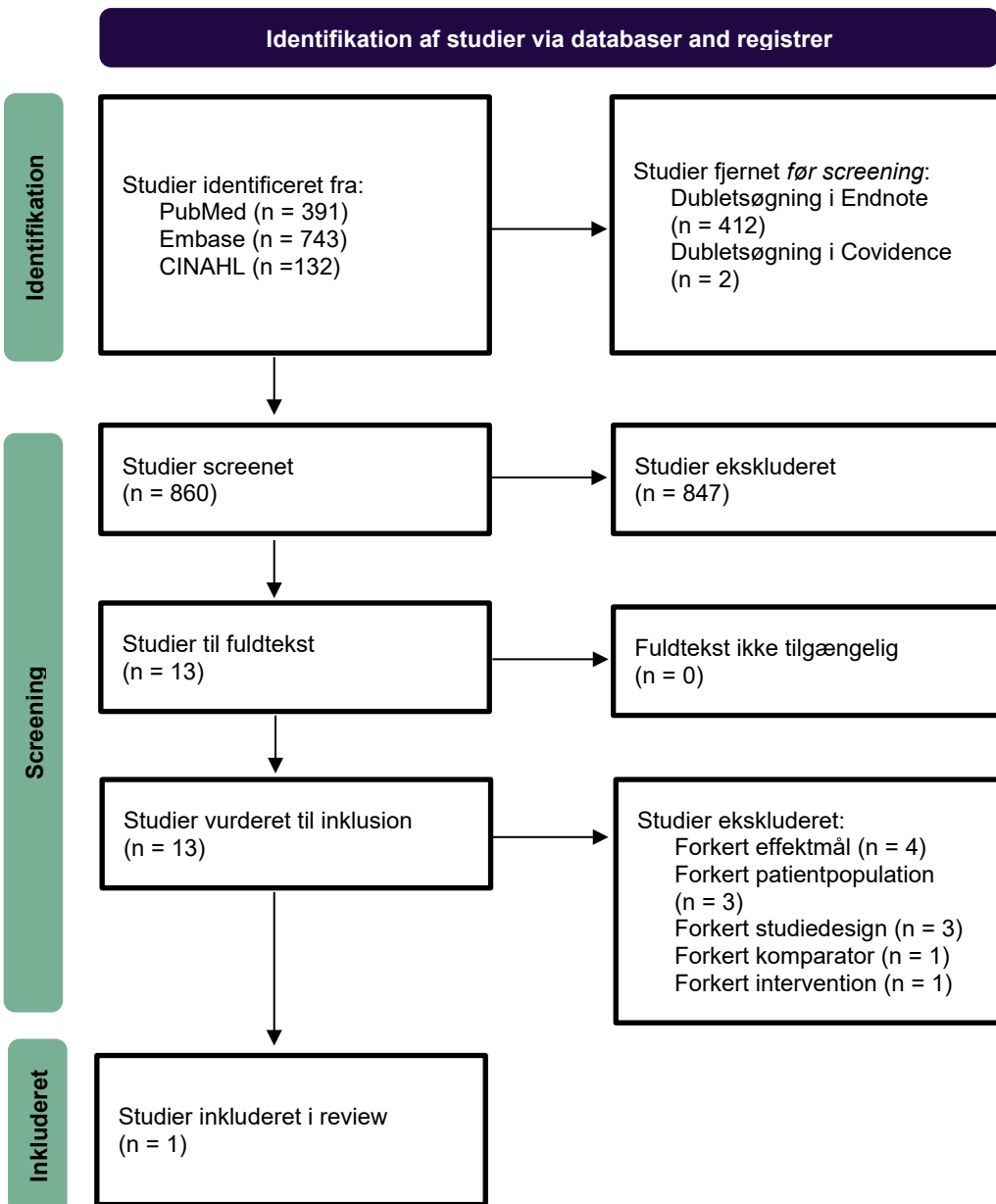
1.10.3 Systematisk reviews og primær litteratur - Patientperspektivet



1.10.4 Systematiske review og primær litteratur – Organisatoriske implikationer



1.10.5 Systematiske reviews og primær litteratur - Sundhedsøkonomi



2

Bilag til Klinisk effekt og sikkerhed

2.1 Oversigt over komplikationer

		Hassellund et al., 2021	Saving et al., 2019	Thorninger et al., 2022
Ruptur eller irritation af extensorsener	Non-operativ	-	-	0
	Operativ	-	-	2
Ruptur af flexorsener	Non-operativ	-	0	-
	Operativ	-	1	-
Sårinfektion (overfladisk)	Non-operativ	-	0	2
	Operativ	-	2	0
Karpaltunnelsyndrom eller release	Non-operativ	1	5	2
	Operativ	2	4	1
Komplekst regionalt smertesyndrom (CRPS)	Non-operativ	0	2	-
	Operativ	1	0	-
Sårruptur	Non-operativ	0	-	-
	Operativ	1	-	-
Korrigerende osteotomi	Non-operativ	2	3	-
	Operativ	0	0	-
Reduceret fingerfleksion	Non-operativ	5	-	-
	Operativ	7	-	-
Atrieflimren og myokardieinfarkt	Non-operativ	-	0	-
	Operativ	-	1	-
Forstyrret følesans	Non-operativ	-	5	3
	Operativ	-	7	6
Arvæshypertrofi	Non-operativ	-	0	-
	Operativ	-	2	-
Operation (enten sekundært eller re-operation)	Non-operativ	3*	2***	2*****
	Operativ	5**	4****	2*****

*2 grundet korrigerende osteotomi (talt med under korrigerende osteotomi) og 1 grundet karpaltunnelsyndrom (talt med under karpaltunnelsyndrom). ** 2 grundet fjernelse af plade, 2 grundet karpaltunnelsyndrom (talt med under karpaltunnelsyndrom) og 1 grundet såråbning. *** Pladefiksering. **** 2 grundet karpaltunnelsyndrom (talt med under karpaltunnelsyndrom) og 2 grundet infektion i sene. ***** Årsag fremgår ikke tydeligt.

2.2 Resultater for de enkelte studier

Resultater fra Hassellund et al., 2021									
Måleenhed (jf. design)	Effekt mål (jf. studie)	Gruppe	N	Resultat pr. gruppe	Absolut effektforskel		Relativ effektforskel		Metode
					Estimeret effektfor- skel (95 % CI)	P-værdi	Estimeret effektfor- skel [95 % CI]	P-værdi	
Fysisk funktion målt via Quick-DASH (12 måneder)	Fysisk funktion målt via Quick-DASH (12 måneder)	Non-operativ behandling	46	5* (IQR 0; 11)	5	0,206	-	-	Forskel i median. Mann-Whitney U test.
		Operativ behandling	47	0* (IQR: 0; 7)					
Fysisk funktion målt via Quick-DASH (6 måneder)	Fysisk funktion målt via Quick-DASH (6 måneder)	Non-operativ behandling	43	7* (IQR: 2; 18)	5	0,030	-	-	Forskel i median. Mann-Whitney U test.
		Operativ behandling	47	2* (IQR: 0; 11)					
Fysisk funktion målt via PRWHE (12 måneder)	Fysisk funktion målt via PRWHE (12 måneder)	Non-operativ behandling	45	2* (IQR: 0; 12)	2	0,019	-	-	Forskel i median. Mann-Whitney U test.
		Operativ behandling	46	0* (IQR: 0; 8)					
Fysisk funktion målt via	Fysisk funktion målt via	Non-operativ behandling	43	9* (IQR: 2; 20)	5	0,020	-	-	

PRWHE (6 måneder)	PRWHE (6 måneder)	Operativ behandling	47	4* (IQR: 0; 13)					Forskel i median. Mann-Whitney U test.
Helbredsrelateret livskvalitet (EQ-5D)	Helbredsrelateret livskvalitet (EQ-5D)	Non-operativ behandling	44	0,83**	-0,07 (95%CI - 0,13; - 0,01)	0,020	-	-	Forskel i gennemsnit. T-test.
		Operativ behandling	46	0,90**					
Grebsstyrke - kg	Grebsstyrke - kg	Non-operativ behandling	44	17**	-2 (95%CI - 4; 1)	0,094	-	-	Forskel i gennemsnit. T-test.
		Operativ behandling	46	19**					
Grebsstyrke – procent af ubeskadiget side	Grebsstyrke – procent af ubeskadiget side	Non-operativ behandling	44	77**	-12 (95%CI - 18; -5)	<0,001	-	-	Forskel i gennemsnit. T-test.
		Operativ behandling	46	88**					
Uønskede hændelser	Komplikationer	Non-operativ behandling	50	8***	10 %-point (95% KI -5,85; 25,85)	-	0,62 [95%CI 0,28; 1,35]	0,23	Antal hændelser ekstraheret fra studie. Relativ og absolutte forskelle udregnet herfra.
		Operativ behandling	50	13***					

*Median, ** Gennemsnit, *** Antal patienter

Resultater fra Saving et al. (2019)

Måleenhed (jf. design)	Effekt mål (jf. studie)	Gruppe	N	Resultat pr. gruppe	Absolut effektfor- skel		Relativ effektfor- skel		Metode
					Estime- ret effektfor- skel (95 % CI)	P-værdi	Estimeret effektfor- skel [95 % CI]	P-værdi	
Fysisk funktion målt via PRWE (12 måneder)	Fysisk funktion målt via PRWHE (12 måneder)	Non-operativ behandling	63	22,4* (SD 21,4) [17,5 (34)]**	9,7 (95%CI 3,12; 16,28)	0,014	-	-	Forskel i gen- nemsnit og me- dian. Mann- Whitney U test.
		Operativ be- handling	56	12,7* (SD 15) [7,5 (18,3)]**	16,28) [10***]				
Helbredsrelate- ret livskvalitet (EQ-5D)	Helbredsrelate- ret livskvalitet (EQ-5D)	Non-operativ behandling	63	0,765* (SD 0,214) [0,796 (0,310)]	-0,03 (95%CI - 0,11; 0,05)	0,0215	-	-	Forskel i gen- nemsnit og me- dian. Mann- Whitney U test.
		Operativ be- handling	56	0,794 (SD 0,240) [0,796 (0,300)]					
Grebsstyrke – procent af ube- skadiget side	Grebsstyrke – procent af ube- skadiget side	Non-operativ behandling	63	80,9 (SD 23,6) [80 (22)]	-15,1 (95%CI - 23,61; - 6,59)	0,001	-	-	Forskel i gen- nemsnit og me- dian. Mann- Whitney U test.
		Operativ be- handling	56	96 (SD 23,7) [96,8 (32)]					

* Gennemsnit, ** Median og bredden af IQR, *** Forskel i median.

Resultater fra Thorninger et al., 2022

Måleenhed (jf. design)	Effekt mål (jf. studie)	Gruppe	N	Resultat pr. gruppe	Absolut effektfor- skel		Relativ effektfor- skel		Metode
					Estimeret effektfor- skel (95 % CI)	P-værdi	Estimeret effektfor- skel [95 % CI]	P-værdi	
Fysisk funktion målt via Quick- DASH (12 må- neder)	Fysisk funktion målt via Quick- DASH (12 må- neder)	Non-operativ behandling	42	-	4,2* (95%CI - 4; 12)	-	-	-	Forskel i gen- nemsnit ekstra- heret fra stu- diet.
		Operativ be- handling	43	-					
Fysisk funktion målt via Quick- DASH (6 måne- der)	Fysisk funktion målt via Quick- DASH (6 måne- der)	Non-operativ behandling	46	-	4,3* (95%CI - 2; 10)	-	-	-	Forskel i gen- nemsnit ekstra- heret fra stu- diet.
		Operativ be- handling	43	-					
Fysisk funktion målt via PRWHE (12 måneder)	Fysisk funktion målt via PRWHE (12 måneder)	Non-operativ behandling	42	8* (95%CI 3,6; 12,4)	-0,6 (95%CI - 7,9; 6,7)	-	-	-	Forskel i gen- nemsnit.
		Operativ be- handling	43	8,6* (95%CI 2,5; 14,7)					
Fysisk funktion målt via PRWHE (6 må- neder)	Fysisk funktion målt via PRWHE (6 må- neder)	Non-operativ behandling	46	12,6* (95%CI 8,7; 16,5)	3	-	-	-	Forskel i gen- nemsnit.
		Operativ be- handling	43	9,6* (95%CI 4,5; 14,7)					

Helbredsrelateret livskvalitet (EQ-5D)	Helbredsrelateret livskvalitet (EQ-5D)	Non-operativ behandling	42	1** (range 0,14; 1)	0	-	-	-	Forskel i median.
		Operativ behandling	43	1** (range 0,36; 1)					
Grebsstyrke - kg	Grebsstyrke - kg	Non-operativ behandling	42	14,8 (95%CI 12,5; 17,1)	-1,40 (95%CI -5,4; 2,6)	-	-	-	Forskel i gennemsnit.
		Operativ behandling	43	16,2 (95%CI 14; 18,5)					
Komplikationer	Komplikationer	Non-operativ behandling	42	7	4,26 %-point (95% KI -12,32; 20,84)	-	0,8 (95%CI 0,33; 1,94)	-	Antal hændelser ekstraheret fra studiet. Relative og absolute forskelle udregnet fra disse.
		Operativ behandling	43	9					
Smerter	Smerter	Non-operativ behandling	42	-	0,1 (95%CI -0,7; 0,7)	-	-	-	Forskel i gennemsnit ekstraheret fra studiet.
		Operativ behandling	43	-					

* Gennemsnit, ** Median

2.3 Resultater fra metaanalyser

Metaanalytiske estimater									
Resultater pr. effektmål (jf. design)	Måleenhed (jf. design)	Studier i analysen	Grupper	N	Absolut effektforskel		Relativ effektforskel		Metode
					Estimeret effektforskel (95 % CI)	P-værdi	Estimeret effektforskel [95 % CI]	P-værdi	
Fysisk funktion målt via PRWHE/ PRWE (kritisk)	Fysisk funktion målt via PRWHE/ PRWE	Saving et al., 2020, Thorninger et al., 2022	Non-operativ behandling	105	4,68 (95%CI - 5,41; 14,77)	-	-	-	Random-effects metaanalyse udført efter metode af DerSimonian-Laird på forskel i gennemsnit.
			Operativ behandling	99					
Helbredsrelateret livskvalitet (EQ-5D) (kritisk)	Helbredsrelateret livskvalitet (EQ-5D)	Hassellund et al., 2021, Saving et al., 2019	Non-operativ behandling	107	-0,06 (95%CI -0,10; -0,01)	-	-	-	Random-effects metaanalyse udført efter metode af DerSimonian-Laird på forskel i gennemsnit.
			Operativ behandling	102					
Komplikationer (vigtig)	Komplikationer (vigtig)	Hassellund et al., 2021, Thorninger et al., 2022	Non-operativ behandling	92	-7,3 (95%CI - 14,5; 5,63)	-	0,69 (95%CI 0,38; 1,24)	-	Random-effects metaanalyse udført efter metode af Mantel-H. Absolut forskel er beregnet fra det metaanalytiske relative estimat, ved brug af en antagelse hændelsesrate for operativ behandling på 23,4%.
			Operativ behandling	93					
Grebsstyrke – kg (vigtig)	Grebsstyrke – kg (vigtig)	Hassellund et al., 2021, Thorninger et al., 2022	Non-operativ behandling	86	-1,88 (95%CI -3,67; -0,09)	-	-	-	Random-effects metaanalyse udført efter metode af DerSimonian-Laird på forskel i gennemsnit.
			Operativ behandling	89					

Grebsstyrke – procent af ubeskadiget side (vigtig)	Grebsstyrke – procent af ubeskadiget side (vigtig)	Hassellund et al., 2021, Saving et al., 2019	Non-operativ behandling	107	-12,65 (95%CI -18,06; -7,25)	-	-	-	Random-effects metaanalyse udført efter metode af DerSimonian-Laird på forskel i gennemsnit.
			Operativ behandling	102					

© Behandlingsrådet, 2024.

Udgivelsen kan frit refereres med tydelig kildeangivelse.

www.behandlingsraadet.dk

Niels Jernes Vej 6A, 9220 Aalborg Ø

Versionsnummer: 1.0

Sprog: Dansk

Udgivet af Behandlingsrådet, d. 13.02.2024

Behandlingsrådet